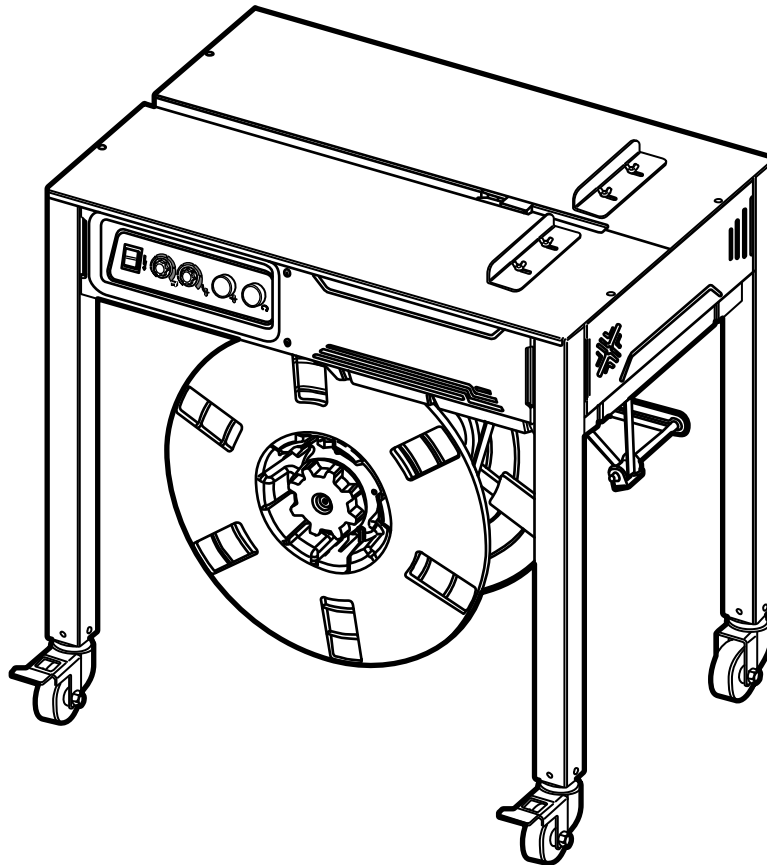


EXS-100

Easteey EXS-100 Semi-Automatic Strapping Machine

User Guide



EASTEY®

PACKAGING PLUS
317-841-1126 INFO@HOTMELTUNITS.COM

PACKAGING PLUS
317-841-1126 INFO@HOTMELTUNITS.COM

EXS-100

Eastey EXS-100 Semi-Automatic Strapping Machine

User Guide

Revised 05/11/2020

P/N 5001699 Rev. A

Copyright and Trademarks

Copyright ©2020 Engage Technologies Corporation.
All rights reserved. All trademarks and brand names
are the property of their respective owners.

Eastey
7041 Boone Ave. N.
Brooklyn Park, MN 55428

Phone: (763) 428-4846; Fax (763) 795-8867; 1-800-835-9344
www.eastey.com

PACKAGING PLUS
317-841-1126 INFO@HOTMELTUNITS.COM

PACKAGING PLUS
317-841-1126 INFO@HOTMELTUNITS.COM

Contents

Safety	7
Explanation of Symbols	8
Introduction	9
EXS-100 Semi-Automatic Strapping Machine Overview	9
Specifications	10
Dimensions.....	11
Machine Serial Number	12
Typical Applications.....	12
Installation	13
Location Requirements.....	14
Assembling Stop Angle Brackets to Top Work Surface.....	15
Loading the Strap Coil in the Spool and Routing the Strap	16
Operation	17
Main Control Panel	17
Operating the Machine and Strapping Packages	18
After Operating the Strapping Machine	20
Adjustments	21
Secondary Control Panel.....	21
Strap Width Adjustment	22
Maintenance	24
Weekly Maintenance	24
Monthly Maintenance	25
Cleaning the Top Working Surface.....	25
Troubleshooting	26
Parts List.....	27
Figure 1-1 Sealer Seat Unit 5030421	27
Figure 2-1 Feed Drive Unit 5030464	30
Figure 3-1 End Gripper Unit 5030493/P02-0362100	32
Figure 4-1 Welding Clamp Unit 5030500/P02-0362200	33
Figure 5-1 Holding Gripper Unit 5030508/P02-0394600	34
Figure 6-1 Position Cam Unit 5030517/P02-0394700	35
Figure 7-1 Sliding Table Unit 5030521/P02-0394300.....	36
Figure 8-1 Separating Plate Unit 5030530/P02-0394400	37
Figure 9-1 Heater Plate Unit 5030545/P02-0394500.....	39
Figure 10-1 Body Frame 5030558.....	41
Figure 11-1 Dispenser Assembly	43
Figure 12-1 Dispenser Unit	45
Electrical Panel and Wiring Parts 5030400	47
Appendix A: Electrical Schematic	49
Warranty Statement	50

Customer Support.....	52
------------------------------	-----------

Safety

Read this manual carefully and make it available to everyone connected with the supervision, maintenance, or operation of this machine. Additional copies are available on request (Eastey.com/contact-us).

The development of a good safety program that is rigidly enforced is absolutely imperative when involved in the operation of industrial equipment. Our machinery is well designed and includes extremely important safety features. Proper installation, safe operation, and regular maintenance and upkeep are of far greater importance than our design. Only properly trained individuals, following rigidly enforced safety rules, as recommended by ANSI and OSHA should be allowed to operate this machine.

Be very careful when operating, adjusting, or servicing this equipment. Unless used properly, the machine can cause injury to operators or persons near it. In addition, improper use of the machine can cause damage to it or property near it. If in doubt, stop and obtain qualified help before proceeding.

General Safety Precautions

Before installing, operating or servicing this equipment, please read the following precautions carefully:

- Always disconnect electrical power before attempting maintenance for any electrical or moving parts.
- Do not tamper with electrical wiring. Use only specified power supply cable. Use only licensed electricians to check or repair wiring. Do not attempt to open or work on the electrical box, junction boxes or other electrical components of the unit without first disconnecting power to the machine. Electrical shock hazard exists if power is not disconnected.
- Keep hands and feet away from moving parts. Do not by-pass any factory-designed safety features such as guards, interlocks, switches, etc.
- Never provide service or clear a jam when machine is running. Do not place hands or body inside the confines of the machine unless all mechanisms are securely fastened and the electrical supply is shut off.
- Do not stand or climb on any part of the Strapping Machine or its frame.
- Do not wear loose clothing such as ties, scarves, jewelry etc. Long hair should be pulled back and/or covered while operating this machine.
- Always wear safety glasses when operating this machine. Use appropriate protective equipment whenever required by circumstances or applicable safety rules.
- Do not leave excess scrap strapping material on the floor as it can create a slipping hazard.

Explanation of Symbols



Caution sign or Safety Alert symbol. Indicates caution, be alert, Your safety is involved. Knowledge of safe operation is required.



Ground symbol. Indicates ground. Use Class-3 (lower than 1000) cable to ground to earth. Incomplete grounding may lead to electrical shock.



Electrical shock hazard. Indicates possible danger of electrical shock. Only a trained electrician should be allowed to open or work in the electrical panel or box.



Caution: Hot Surface or High temperature hazard. Do not touch or place hands close to the heating source to avoid burns. Proceed with any maintenance only when the temperature of the heater or other heat source has cooled down to room temperature.



Caution: Moving parts can crush hand. Keep hands and fingers away from moving parts.



Caution: Pinch point or entanglement. Keep hands and fingers away from moving parts.



Caution: Sharp Blade could cut fingers or hand. Keep hands and fingers away.



Caution: Eye protection is required when operating the Semi-Automatic Strapping Machine. Always wear safety glasses when operating this machine.



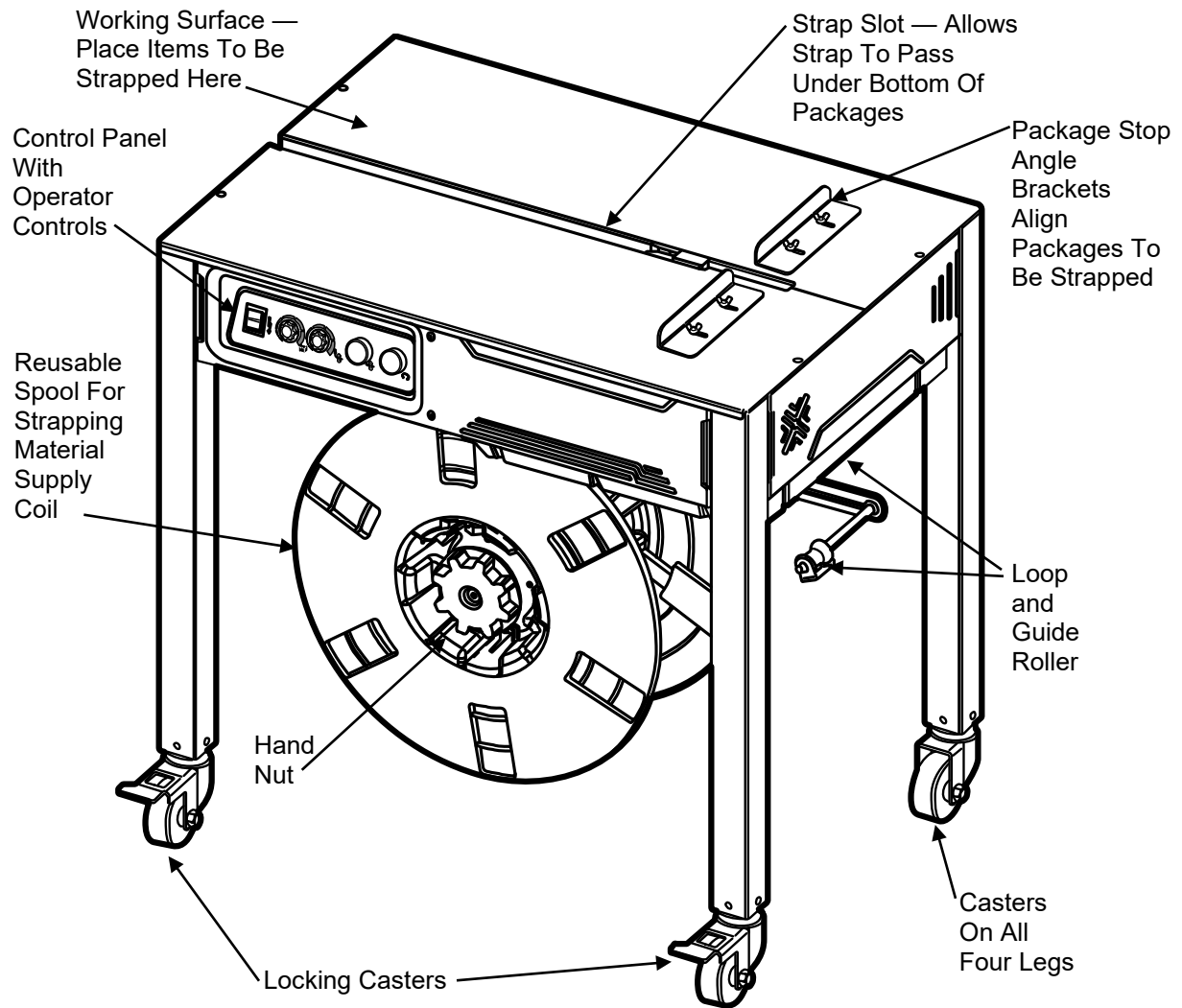
Moisture hazard. Keep equipment dry. This equipment is designed for indoor operation in a typical clean, dry factory environment, protected from rain and moisture. Do not operate the machine in any extremely wet or oily environment that may exceed operating specifications.



Refer to this User Guide for important safety information and operating instructions to set up, operate, adjust, and maintain this Semi-Automatic Strapping Machine.

Introduction

EXS-100 Semi-Automatic Strapping Machine Overview



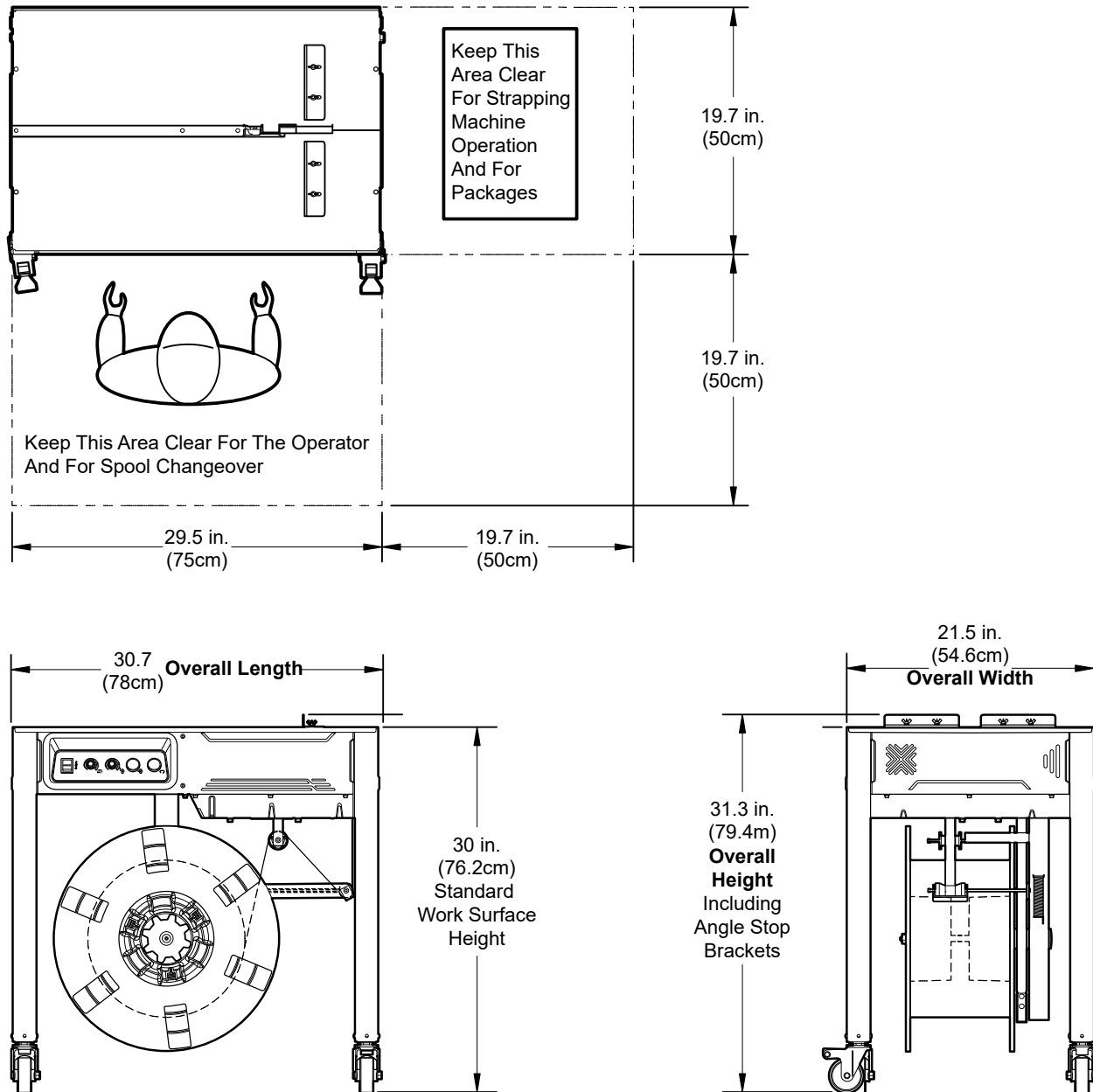
Specifications

Strap Width	0.2" – 0.6" (5mm - 15.5mm)
Strap Thickness	0.02 – 0.027 (0.45mm – 0.7mm)
Strap Coil Core Diameter	7.9" (200mm)
Strap Coil Core Width	7.5" – 7.9" (190mm – 200mm)
Strap Material	Polypropylene only
Minimum Package Size	2.75" (70mm) W × 0.79" (20mm) H
Maximum Package Weight	130lbs (59kg)
Speed	1 meter/s for feeding; 1 meter/s for reversing
Machine Tension	2 – 121lbs (1 - 55kg)
Machine Dimensions	21.4" (54.4cm) W × 30.7" (78cm) L × 30.7" (78cm) H
Power Supply	100V/110V, 50/60Hz, 1 Phase
Weight	117lbs (53kg)

Standard features

- Small machine footprint allows for use almost anywhere within your facility
- Four casters for easy transportation; two locking casters at operator's side lock to prevent rolling during operation
- Jog switch for service and maintenance
- Adjustable cooling time for various weld seals
- Open cabinet design allows for quick poly strapping changeover
- Adjustable packaging guides to allow for a variety of package sizes
- Electronically controlled tension adjustment
- One motor with no clutch, belt, or chain
- Motor power saving when strapping is not active
- Accepts straps ranging in width from 5mm to 15.5mm (0.2" to 0.6"); uses reusable spools for strapping material
- Simple and efficient to use
- No air required
- Strap packages up to 130 lbs (59kg)
- 110V single-phase power supply

Dimensions



Dimensions are shown in inches (and centimeters) as indicated.


Machine Serial Number

The Machine Serial Number can be found on the identification label on the vertical surface of the left end of the Strapping Machine body.

The identification label displays the Model Number, Serial Number, Year of Manufacture, and Electrical Power Requirements.

Record the Serial Number and Year of Manufacture for future reference.

Note the electrical power characteristics indicated below the Model and Year. These specify the electrical power requirements of the strapping machine.

		
CARTON SEALING MACHINE		
MODEL:	EXS-100	
SERIAL:		
YEAR:		
Volt	Phase	
110V	1 PH	
Watt	Ampere	Hertz
0.2kW	1.8A	50/60HZ

Typical Applications

Eastey EXS-100 Semi-Automatic Strapping Machine

This plastic strapping machine can be used for a wide range of applications where the maximum package width is at least 2.75 inches (70mm) and the minimum height is 0.79 inches (20mm).

This machine is particularly suitable for moderately heavy packaged goods as well as printed products, printer/copier paper boxes, etc.

Do NOT use the Strapping Machine to strap the following product types:

- Explosive Products
- Flammable Products
- Hazardous Products
- Pharmaceuticals
- Agri-Foodstuffs
- Wet Products
- Products that are heavier or larger than allowed by the machine specifications.

Do not operate the machine in any extremely wet or oily environment that may exceed operating specifications. This equipment is designed for indoor operation in a typical clean, dry factory environment protected from rain and moisture.

Use only polypropylene (P.P.) strapping. **Do not Use** polyester (PET) strapping or polyethylene (PE) cord strap.

Installation

Unpack the outer carton and shipping material carefully to avoid damaging the strapping machine.

Remove shipping straps securing the strapping machine legs and casters to the molded shipping base and lift the strapping machine off the pallet.

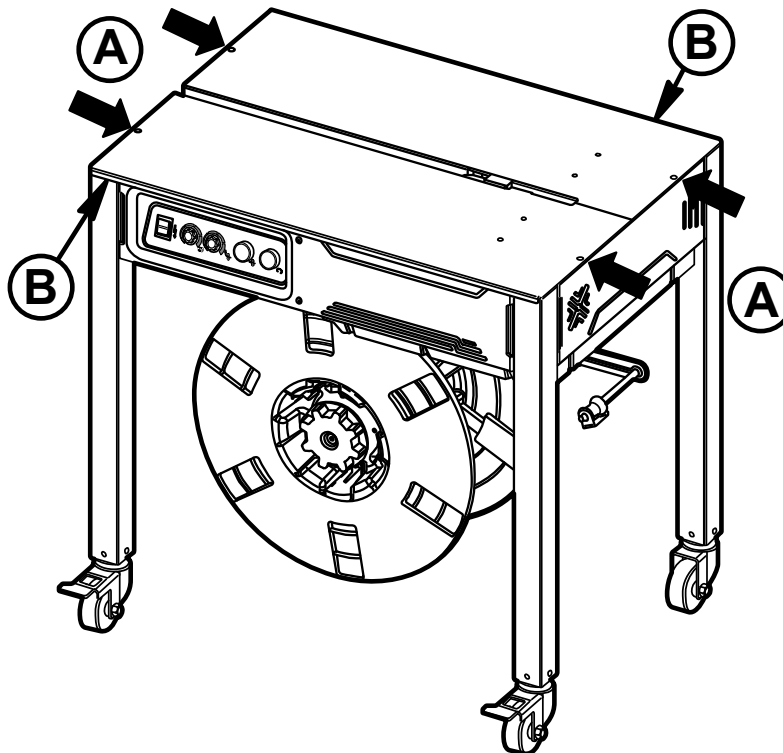
CAUTION! The strapping machine may require more than one person to move safely off the shipping base.

The strapping machine is shipped almost fully assembled and ready for use, except a few items that are shipped inside the machine body and require attention and removal, and some minimal assembly is required before operation.

Note: A 3-millimeter Allen wrench will be required to temporarily remove the strapper top plates to remove items that have been placed inside the strapper machine body for shipping.

Remove items placed inside the machine body for shipping

Loosen the flat head socket screws at the locations indicated by (A) that fasten the metal work-surface plates (B) to the top of the machine body.



Lift the plates (B) to open the top of the machine body and find and remove the following items from inside.

- A User Guide packet, which contains the following.
 - This User Guide
 - An Allen wrench set
 - A pair of stop angle brackets with attaching hardware
- A desiccant pouch

CAUTION! The items listed above must be removed from the inside of the strapper body before powering or operating the strapper.

These items may be retrieved from inside the machine body before or after moving the strapper to its desired operating location, but they must be removed before powering or operating the strapper. Once these items have been removed, refasten the top work-surface plates to the top of the machine body using the same flat head socket screws removed earlier. Instructions are provided later in this section for attaching the stop angle brackets to the top work surface of the strapper. Do not operate the strapper with top plates removed.

Casters

The strapping machine is equipped standard with four casters (one caster on each of its four legs). The two casters on the legs at the front of strapping machine are locking casters. Lift the levers upward to unlock the casters to the machine to allow the machine to be moved.



Move the strapping machine to the desired location. Casters allow the strapping machine to be rolled across a smooth, level floor surface. When the strapping machine has been moved to the desired location, press the lever of each of the two front locking casters down, to the locked position, to keep the strapping machine from moving.

Location Requirements

When installing the Eastey EXS-100 Semi-Automatic Strapping Machine it is important to be aware of the following considerations:

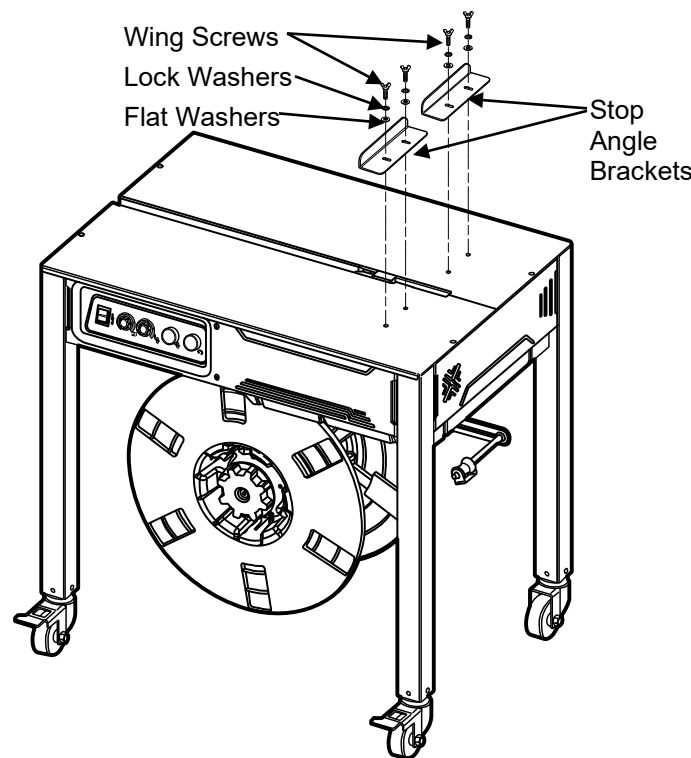
1. The floor surface is flat and level where the strapping machine will be placed.

2. Height of nearby packing equipment feeding into or receiving product from the strapping machine. The EXS-100 Semi-Automatic Strapping Machine is pre-configured to 30.7 in. (78cm) standard height.
3. Alignment with packaging line.
4. Allow for a clear area of approximately 19.7 inches (50mm) minimum from the front (operator's side) for the length of the machine for the operator, and 20 inches (50mm) minimum from the right side for the width of the strapping machine for packages. See the Dimensions diagram in the Introduction of this User Guide.

The strapping machine should be placed on a flat, level floor and the locking casters locked so that it does not rock or move.

Assembling Stop Angle Brackets to Top Work Surface

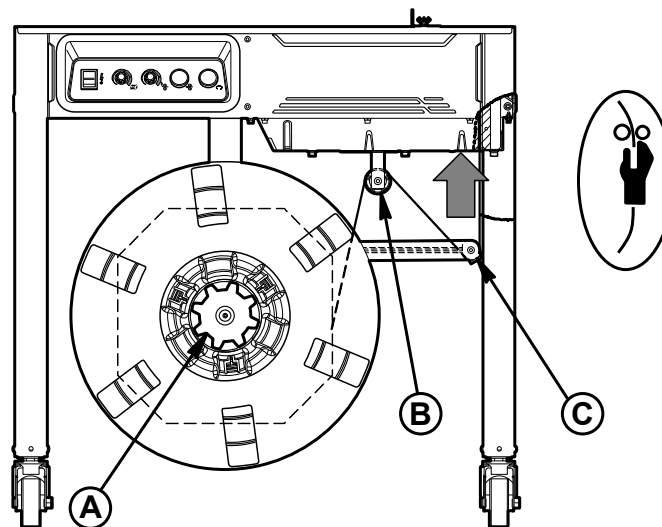
The package provided with the User Guide and stop angle brackets contains four each of wing bolts, flat washers, and lock washers. Placing the flat washers above the slot holes in the stop angle brackets and placing the lock washers above the flat washers, next to the wing bolt head, fasten the stop angle brackets to the strapper top work surface as shown.



Loading the Strap Coil in the Spool and Routing the Strap

The strap threading procedure involves loading the dispenser spool and then routing the strap from the spool up and through the strapper machine body.

1. Rotate the hand nut (A) at the center of the spool hub counterclockwise to remove the nut from the spool shaft and set it aside. Remove the dispenser spool flange and remove any remaining old strap coil inside.
2. Remove all adhesive strips or other adhesive material from the new coil of strapping material.
3. Follow the direction indicated on the rotation direction sticker on the dispenser to put the new strap coil into the dispenser spool.
4. Put the outer dispenser flange back onto the spool and secure it by installing and tightening the hand nut, removed earlier, onto the spool shaft by turning it clockwise.
5. Unroll about 20 inches (0.5 m) of strap, making sure it is not twisted.
6. Thread the strap through the guide roller bracket (B) and the loop (C).



Note: Make sure the plastic strap curves downward as shown. Inserting the strap into the machine in the wrong direction could cause instability and problems with auto-threading, feed and refeed functionality.

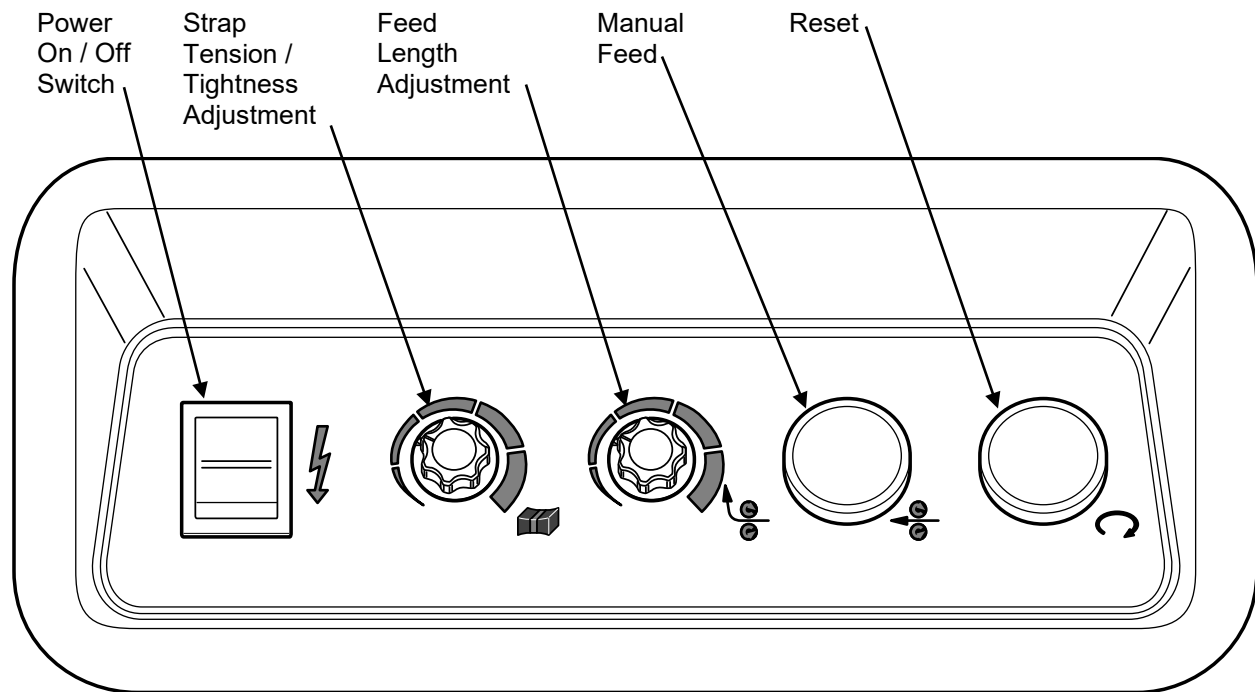
7. Insert the strap upward into the machine until the strap meets with material that prevents it from being pushed further. Hold the strap loosely at this position.

CAUTION! Do not grip strap tightly or pinch fingers in feed rollers.

8. Press the Manual Feed button and the strap will feed into the strapping machine.

Operation

Main Control Panel



The main control panel is located on the operator's side of the strapping machine, just below the work surface and to the left end of the machine.

Power On / Off Switch

The Power On / Off switch turns power to the machine on or off. Power is switched off when the switch is in the down position: power is on when the switch is in the up position.

Strap Tension / Tightness Adjustment

Use this dial adjustment to increase or decrease the tension or tightness of the strap. Turn the dial clockwise to increase strap tension or turn the dial counterclockwise to decrease strap tension.

Feed Length Adjustment

Use this dial adjustment to control the amount of strapping material that is fed out for each package to be strapped. Turn the dial clockwise to increase the feed length or turn the dial counterclockwise to decrease the feed length.

Manual Feed

Use this button to manually feed strapping material. Strapping material will be fed out for as long as the button is pressed. Release the button to stop feeding material.

Reset

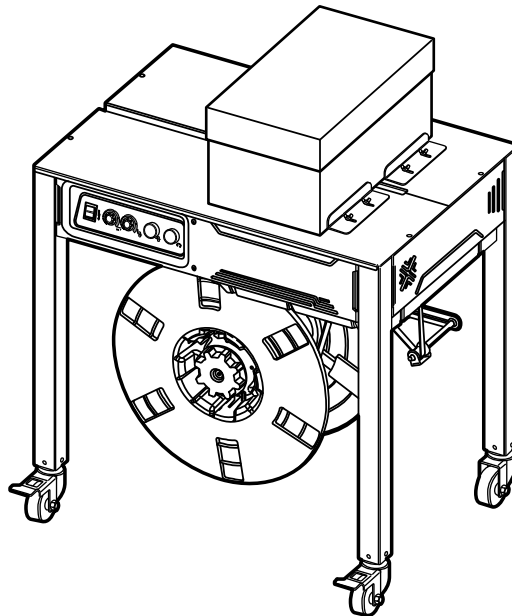
The Reset button allows you to reset the strapper, expelling the strapping material in the current job and cutting it off in order to begin with a freshly cut strap end.

Operating the Machine and Strapping Packages

1. To begin operation, turn the Main Power Switch to the On position. The heating element requires approximately 1 minute to reach operating temperature.

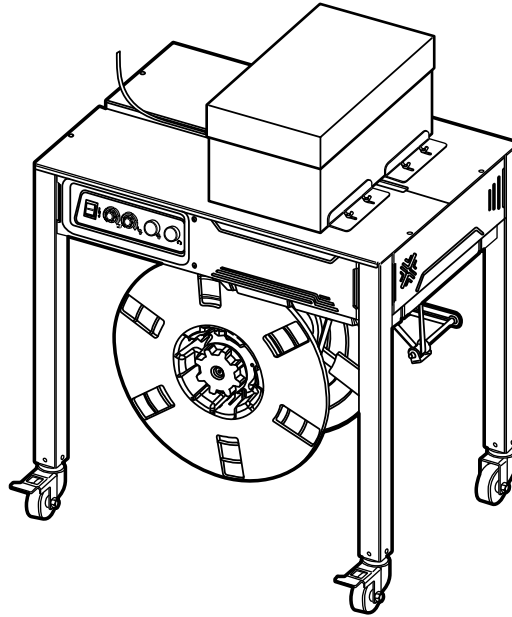
CAUTION! When the power is turned on keep hands and arms of the tabletop, which may become hot from the heating element. Keep hands and arms clear of the area where the strap will be applied to the package.

2. Place a package on the top flat work surface. (The package must cover the table slot.) Slide the package tight against the angle stop brackets.



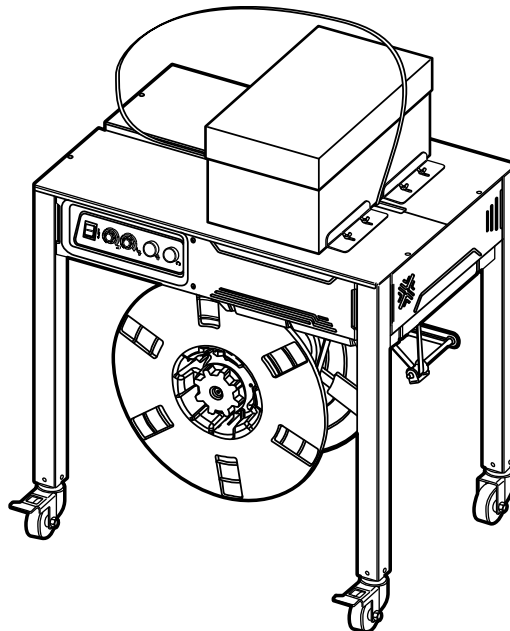
3. Adjust the strap tension the desired strap tension and strap feed length for the package size.

Note: Setting the feed length may take some trial-and-error to attain the right adjustment each time setup for a different carton or package size is required.



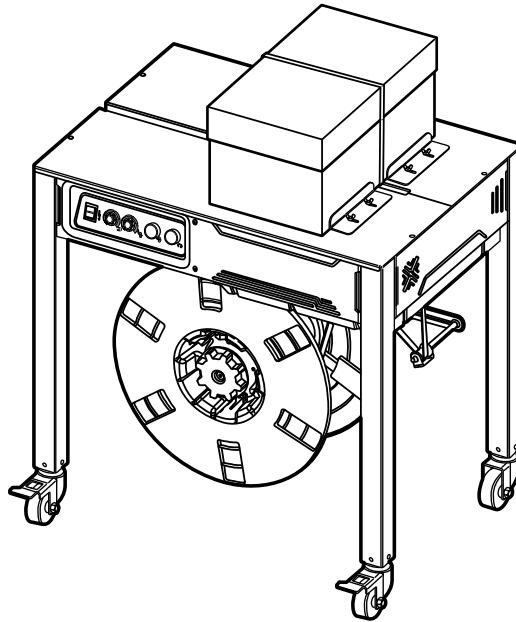
4. Place the strap around the package to be strapped, guiding the strapping material up and over the package so the strapping material makes an arch over and around the package

CAUTION: Keep hands and fingers away from the inside of the arch made by the strapping material while the machine is operating. Do not place arms, fingers, or hands between the strapping material and the package being strapped. This is a pinch area.



5. Feed the end of the strap into the strap slot between the stop angle brackets, and the sealing mechanism inside will pull the strap tight and weld and cut the ends of the strap.

Note: A minimal amount of smoke may be emitted from the heating element and strap ends as they are being welded together. Be sure you have adequate ventilation while operating the machine and avoid inhaling smoke.



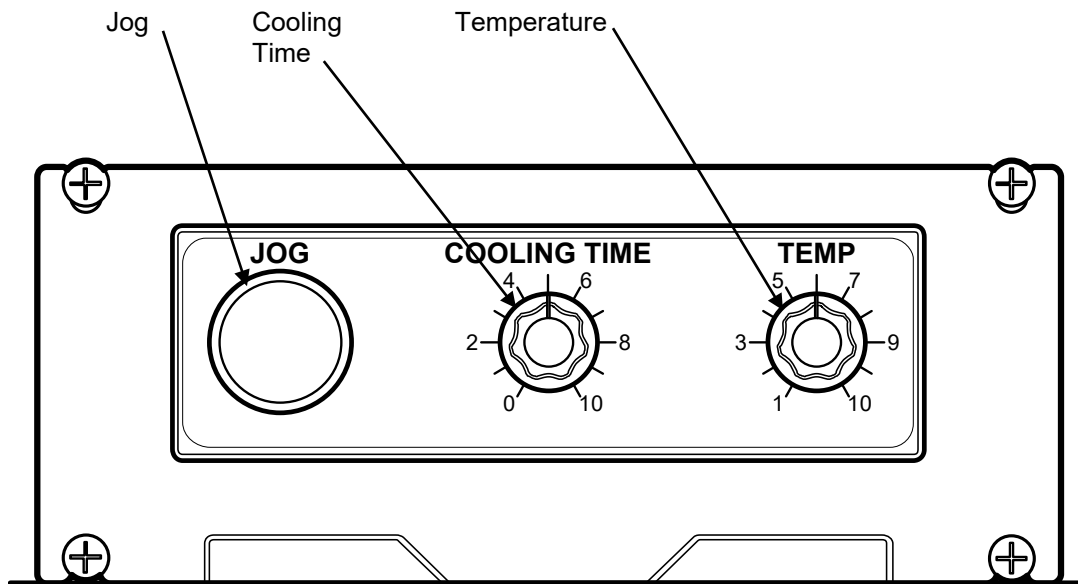
After Operating the Strapping Machine

- ☐ Remove any excess dust or dirt from the machine.
- ☐ Shut off machine main power when the machine is not in use.

Adjustments

Secondary Control Panel

There is a secondary control panel underneath the work surface and behind the main control panel. These controls are for setup, service, or troubleshooting functions. Temperature and cooling time are typically set-and-forget adjustments and access to these controls is not typically required for day-to-day strapping operation.



Note: Refasten strapping machine top plates back into place before resuming normal operation of the strapper. Do not operate the strapper with top plates removed.

Jog

The Jog button is for service only. It allows the operator or technician to step through, step by step, each of the movements the strapper will make as it feeds out the strapping material and seals it around each package. To return to the initial ready position at any time, press the Reset button.

Cooling Time

This dial adjustment increases or decreases the time allowed for the strap to cool after being welded. Larger packages typically require a longer cooling time after the strap weld has been made.

Temperature

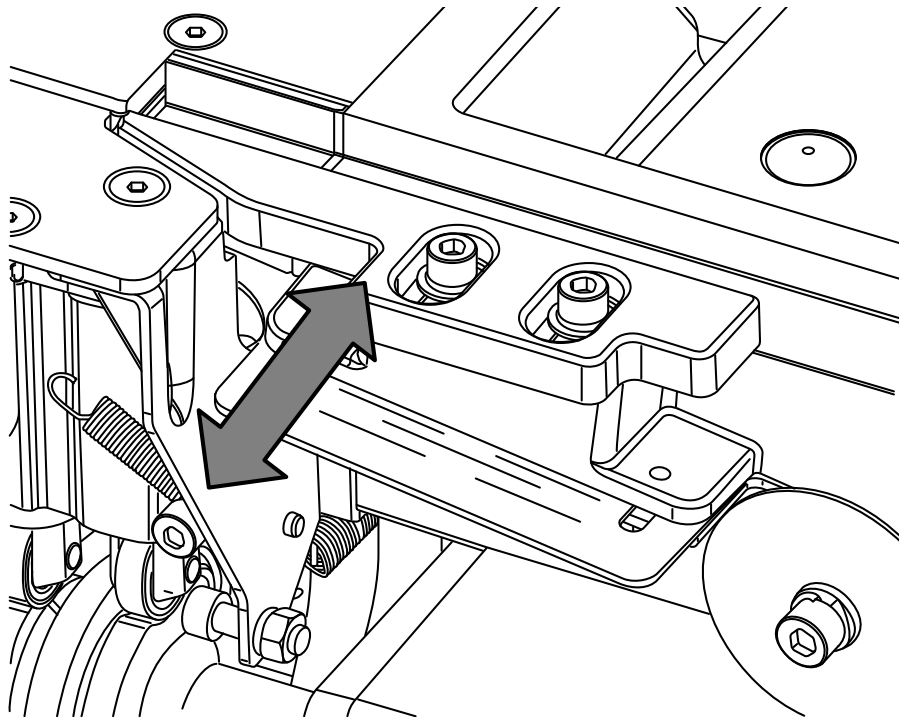
This dial adjustment sets the heater plate temperature used to weld the strapping material. Depending on the strap or working environment, it may be necessary to adjust the heater plate temperature for a better weld. The default setting is approximately 554°F (290°C) for polypropylene straps.

Strap Width Adjustment

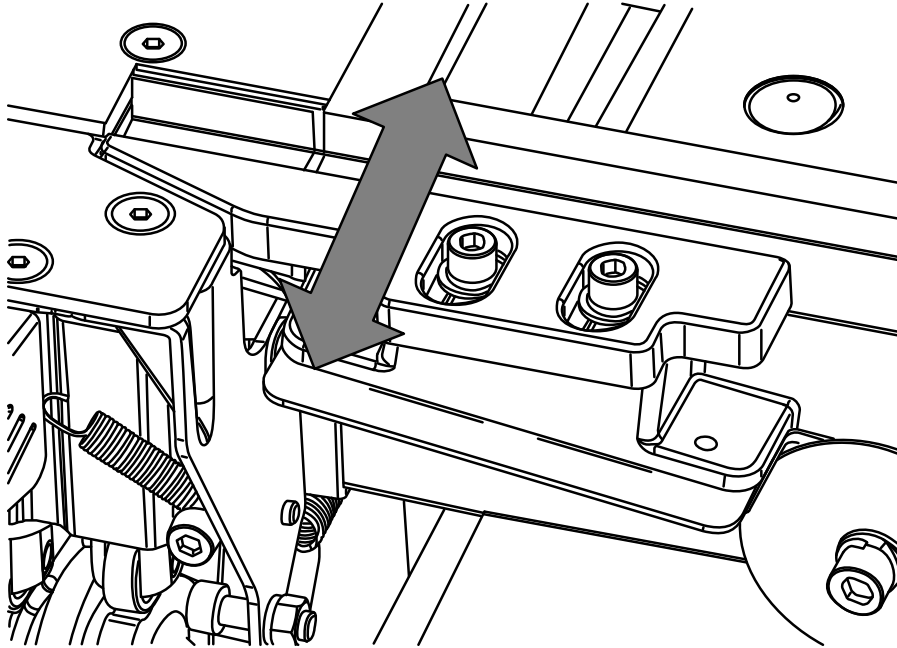
This machine can accommodate straps ranging in width from 0.19 inches (5mm) to 0.61 inches (15.5mm) in width.

Important: Shut off power and allow heater element to cool before making any adjustments.

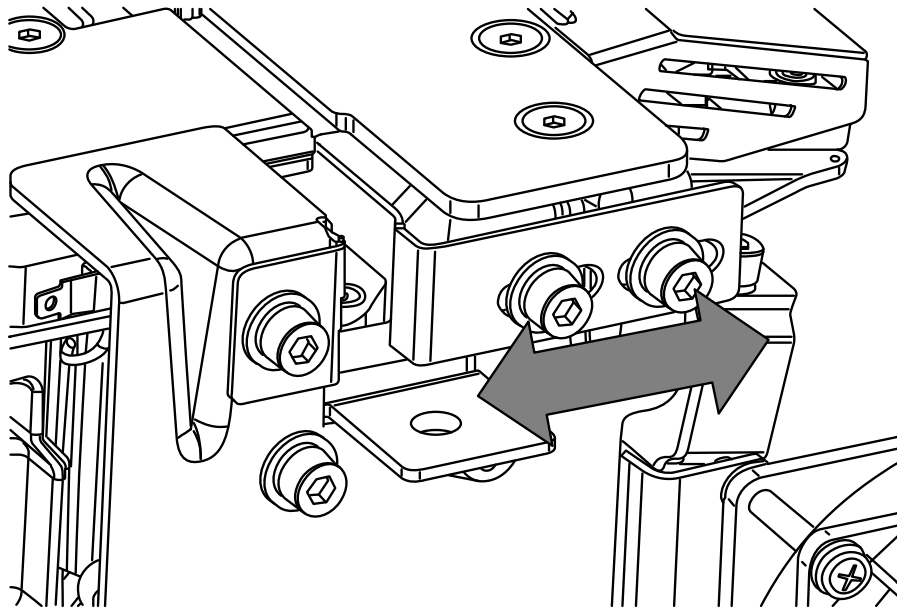
Note: Allen wrenches in the set provided with the sealing machine are required to perform this adjustment procedure.



The plate shown has markings for 0.19 in. (5mm), 0.35 in. (9mm), and 0.47 in. (12mm). For the 0.61 in. (15.5mm) width setting, pull the adjustment plate outward as far as it will move. Use the marking on the adjustment plate and then pull the plate out 0.04 in. (1mm) farther than the mark. Retighten the socket head cap screws to fasten the adjustment block at the desired strap width.



Adjust the plate out 0.04 in. (1mm) farther than the mark. Retighten the socket head cap screws to fasten the adjustment block at the desired strap width.



Loosen the socket head cap screws shown to move this bracket forward or back, as required to accommodate the strap thickness, and then retighten socket head cap screws at the adjusted position when finished.

Maintenance

The Eastey Semi-Automatic Strapping machine will provide many hours of maintenance free operation. There are a few items that may require attention from time to time.

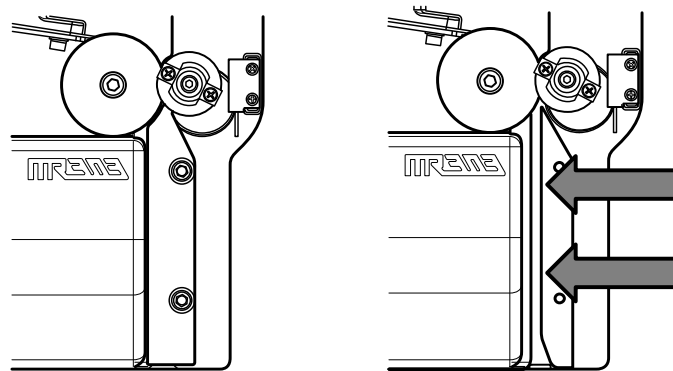
Shut off power and disconnect electrical connections before cleaning or performing maintenance tasks.

CAUTION! Before performing any maintenance or service, switch off the main power, disconnect the machine main power, and wait approximately five (5) minutes for the heater plate to cool.

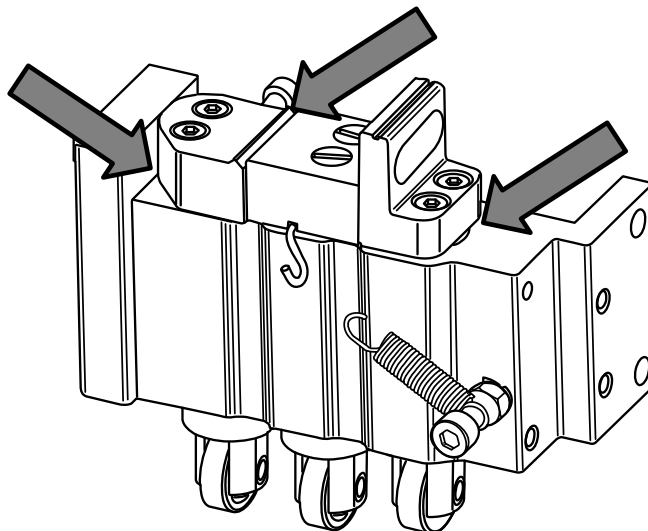
Weekly Maintenance

Use compressed air to blow dust from the machine. Take special care to clean dust from the areas indicated below.

- ☐ The strap guide grooves.

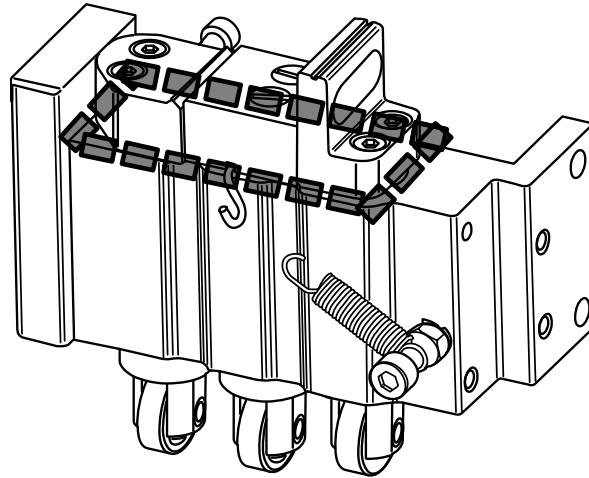


- ☐ Areas of the clamping unit.



Lubricate moving mechanisms of the strapping machine as required, with special attention to lubricate between the clamping units shown below.

- ☐ Between clamp seats and clamps.



Monthly Maintenance

- ☐ Take the End Gripper Unit and Welding Clamp Unit (see Parts Listing for part identification) to perform a complete cleaning and lubrication.
- ☐ Clean both (upper and lower) sides of the heater plate.
- ☐ Check all structures that use springs to make sure they are working smoothly/
- ☐ Clean any dust accumulation around the limit switch.
- ☐ Clean any dust accumulated on rollers (Guide Roller, Tension Roller, Feed Roller).
- ☐ Check condition of the power cord for wear, especially if it is exposed to traffic.
- ☐ Check for overall wear and repair or replace as necessary.
- ☐ Check for loose fasteners. Tighten as necessary.
- ☐ Check the condition of all warning and instruction labels. Replace as necessary.

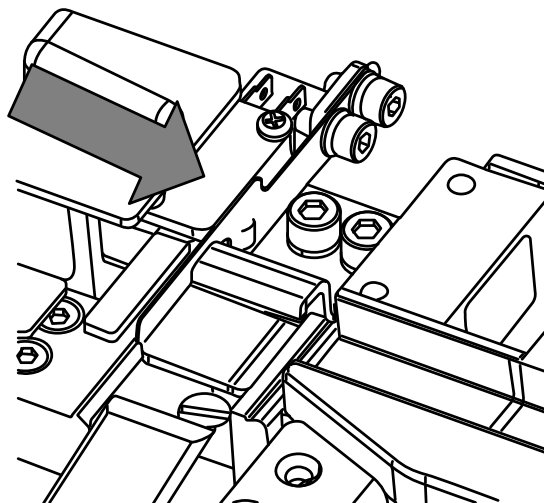
Cleaning the Top Working Surface

Make sure the top working surface stays clean and grease free. If either requires a more thorough cleaning, use a soft, lint-free cloth with a mild detergent and water and let dry. **Never use harsh or abrasive cleaners or chemical agents when cleaning any part of the machine.**

Troubleshooting

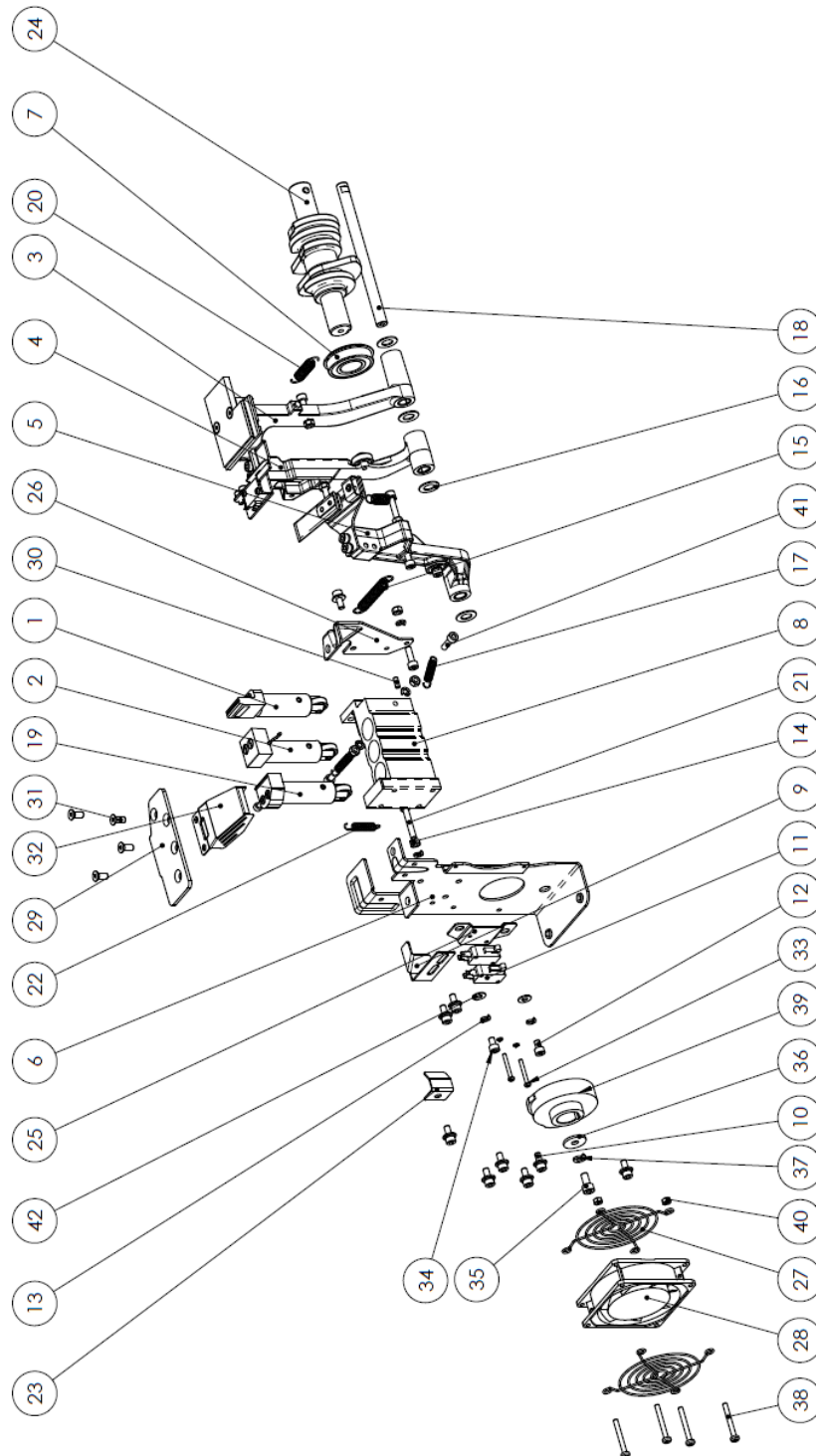
Problem	Possible Cause	Solution
Strap motion is not smooth when feeding or reversing.	<ul style="list-style-type: none">• Strap width adjustment is not set correctly for the width of the strap.	<ul style="list-style-type: none">• Follow instructions in the Adjustments section of this user guide for Changing Strap Width to adjust the machine for the width of the strap.
Strap does not achieve a good weld.	<ul style="list-style-type: none">• Temperature is not set high enough.• Not enough time is provided to allow the weld to cool.• Heater plate is not moving smoothly.	<ul style="list-style-type: none">• Adjust the temperature setting for a hotter weld.• Adjust the cooling time setting to allow the weld to cool for a longer time.• Use the Jog button to step through to see if the heater plate is moving smoothly.
Machine cannot feed.	<ul style="list-style-type: none">• Machine needs to be reset.	<ul style="list-style-type: none">• Press the reset button to make sure the machine is in the initial position for strapping.
Machine does not function when the strap is inserted into the chute	<ul style="list-style-type: none">• Actuator (pictured below) out of adjustment.• Actuator not working.	<ul style="list-style-type: none">• Adjust the actuator to the right position. (Pictured below.)• Replace the actuator.

Actuator



Parts List

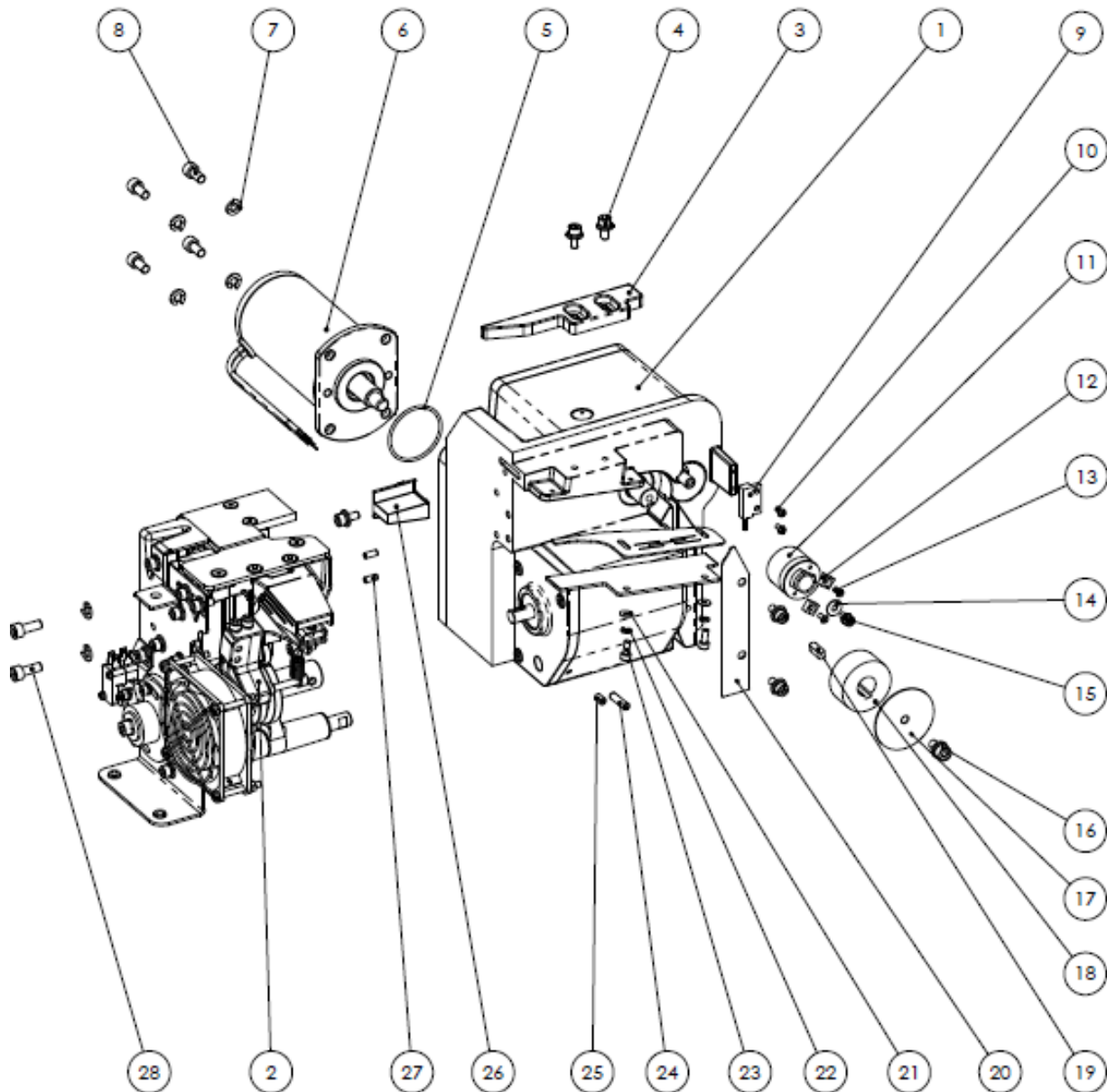
Figure 1-1 Sealer Seat Unit 5030421



ITEM	PART NO.	DESCRIPTION	REFERENCE	Q'TY
0	5030421	SEALER SEAT UNIT		1
1	5030422	END GRIPPER UNIT	P02-0362100	1
2	5030423	WELDING CLAMP UNIT	P02-0362200	1
3	5030424	SLIDING TABLE UNIT	P02-0394300	1
4	5030425	SEPETATOR UNIT	P02-0394400	1
5	5030426	HEATER PLATE UNIT	P02-0394500	1
6	5030427	SEALER SIDE PLATE	P01-0575800	1
7	5030428	BEARING 6004ZZ-NR(CWB)	P1104-076004ZZ1	1
8	5030429	CLAMP SEAT	P02-0357900	1
9	5030430	EXIT ADJUST PLATE	P01-057650A	1
10	5030431	SCREW M5×12	P1101-0905012AN	10
11	5030432	MICROSWITCH MQS-216	P0311-060001600	2
12	5030433	SCREW M5×8	P1101-0505008AN	2
13	5030434	SPRING WASHER 5MM	P1103-0205Z	6
14	5030435	NUT M5	P1102-0105AN	4
15	5030436	SEPERATOR ARM SPRING	P1202-0011500	1
16	5030437	ARM SPACER	P06-0066400	4
17	5030438	WELDING CLAMP SPRING	P1202-0011900	2
18	5030439	ARM SHAFT	P02-0357300	1
19	5030440	HOLDING GRIPPER UNIT	P02-0394600	1
20	5030441	SLIDING TABLE SPRING	P1202-0011600	1
21	5030442	SCREW M5×30	P1101-0505030AN	1
22	5030443	HOLDING GRIPPER SPRING	P1202-0011800	1
23	5030444	EXIT BASE PLATE	P01-0576400	1
24	5030445	CAM UNIT	P02-0359100	1
25	5030446	MICROSWITCH BRACKET	P01-0576800	1
26	5030447	COVER SUPPORT	P01-0576200	1
27	5030448	FAN NET FG-08	P0303-020000100	2
28	5030449	FAN DC24V	P0319-S30304	1
29	5030450	SLIDING TABLE HOLDER	P01-0576300	1
30	5030451	PIN 4×10	P1109-0205010G	1

ITEM	PART NO.	DESCRIPTION	REFERENCE	Q'TY
31	5030452	SCREW M5×12	P1101-0405012AN	4
32	5030453	HEATER PLATE COVER	P01-0584000	1
33	5030454	SCREW M3×25	P1101-0303025AZ	2
34	5030455	SPRING WASHER 3MM	P1103-0203Z	2
35	5030456	SCREW M6×12L	P1101-0506012AN	1
36	5030457	WASHER M6×21×2t	P1103-01062102Z	1
37	5030458	SPRING WASHER 6MM	P1103-0206Z	1
38	5030459	SCREW M4×35L	P1101-0304035AZ	4
39	5030460	POSITION CAM UNIT	P02-0394700	1
40	5030461	NUT M4	P1102-0104AN	2
41	5030462	SCREW M5×16	P1101-0505016AN	3
42	5030463	WASHER M5×12×1t	P1103-01051201Z	2

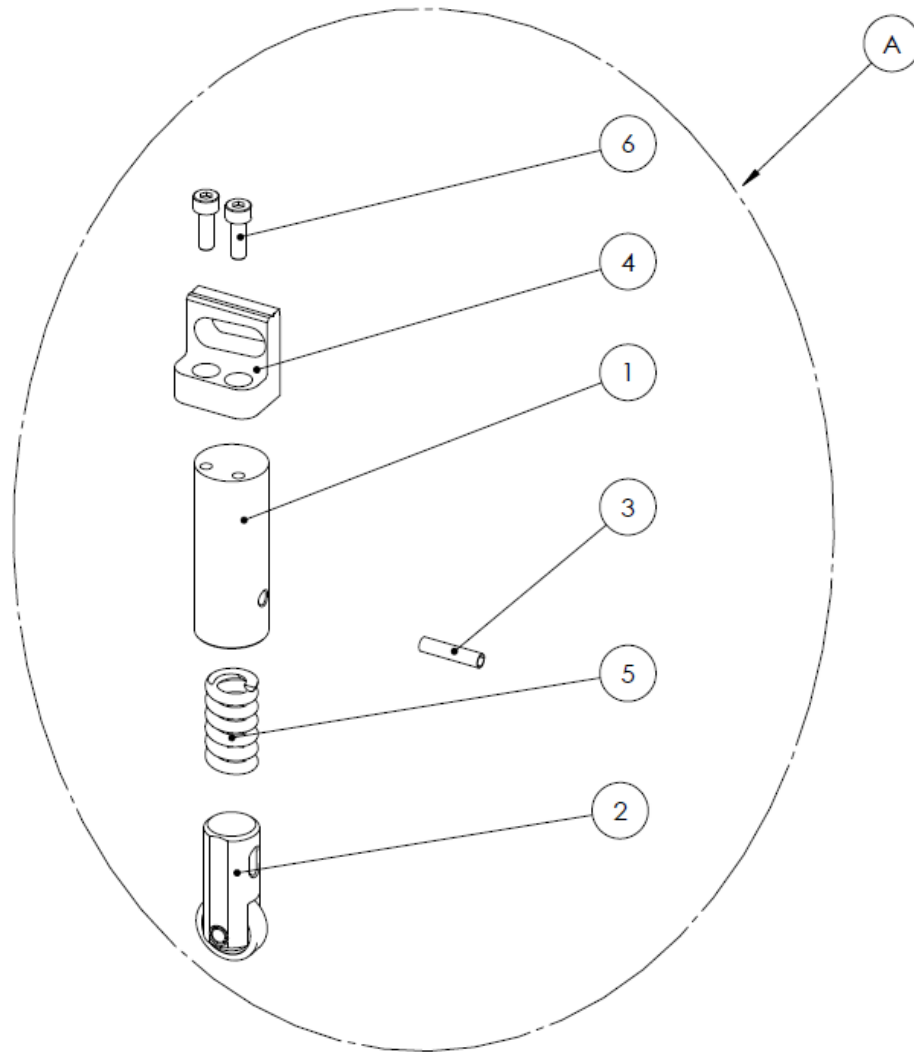
Figure 2-1 Feed Drive Unit 5030464



ITEM	PART NO.	DESCRIPTION	REFERENCE	Q'TY
0	5030464	FEED DRIVE UNIT		
1	5030465	GEAR REDUCER	P02-0363000	1
2	5030466	SEALER SEAT UNIT		1
3	5030467	ADJUSTA PLATE - TOP	P06-0066600	1
4	5030431	SCREW M5×12	P1101-0905012AN	5

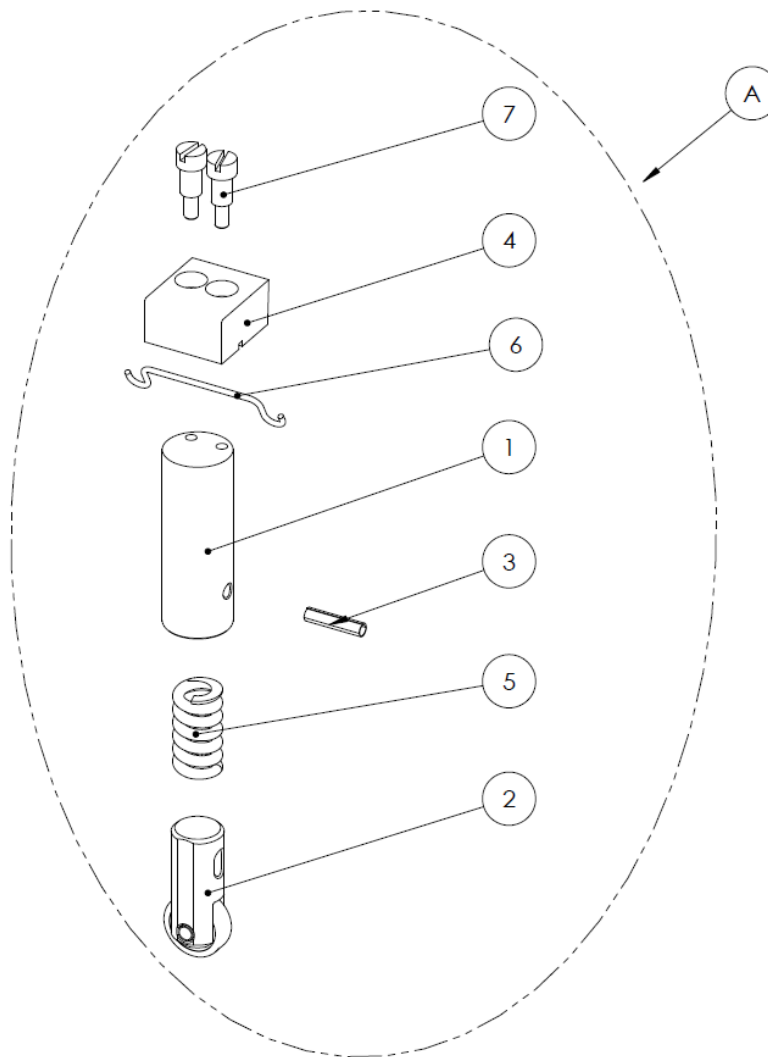
ITEM	PART NO.	DESCRIPTION	REFERENCE	Q'TY
5	5030469	O RING	P1116-P0400	1
6	5030470	DRIVE MOTOR	P0501-0019000	1
7	5030471	WASHER 6MM	P1103-0206Z	6
8	5030456	SCREW M6×12	P1101-0506012AN	4
9	5030473	MAGNETIC REED SWITCH LS-3	P0319-S30303	1
10	5030474	SCREW M3×6	P1101-0303006AZ	2
11	5030475	DRIVEN ROLLER UNIT	P02-0362500	1
12	5030476	MAGNET	P1106-020000200	2
13	5030477	SCREW M3×8	P1101-0203008AZ	2
14	5030478	WASHER 4MM	P1103-010412N	1
15	5030479	SCREW M4×8	P1101-0904008AN	1
16	5030480	SCREW M6×12	P1101-0906012AN	1
17	5030481	ROLLER PLATE	P01-0577300	1
18	5030482	DRIVING ROLLER	P02-0357700	1
19	5030483	KEY 5×5×16	P1108-010505016G	1
20	5030484	GUIDE COVER	P01-0577100	1
21	5030485	WASHER 4MM	P1103-010409N	2
22	5030486	SPRING WASHER 4MM	P1103-0204Z	2
23	5030487	SCREW M4×10	P1101-0504010AN	2
24	5030488	PIN 5×20	P1109-0105020B	1
25	5030489	SCREW M5×8L	P1101-0705008AB	1
26	5030490	STRAP GUIDE	P06-0066500	1
27	5030451	PIN 4×10	P1109-0205010G	2
28	5030492	SCREW M6×16	P1101-0506016AN	2

Figure 3-1 End Gripper Unit 5030493/P02-0362100



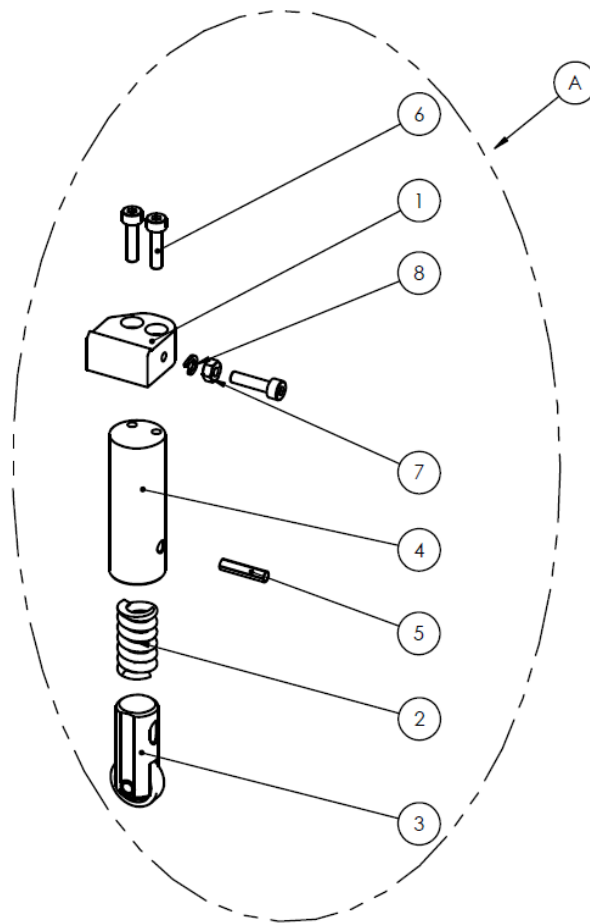
ITEM	PART NO.	DESCRIPTION	REFERENCE	Q'TY
A	5030493	END GRIPPER UNIT	P02-0362100	1
1	5030494	CLAMP SEAT - SHORT	P02-035680A	1
2	5030495	CAM FOLLOWER UNIT	P02-0362900	1
3	5030496	PIN 4×18	P1109-0104018B	1
4	5030497	END GRIPPER	P02-0357100	1
5	5030498	COMPRESS SPRING	P1201-0010200	1
6	5030499	SCREW M4×12	P1101-0504012AN	2

Figure 4-1 Welding Clamp Unit 5030500/P02-0362200



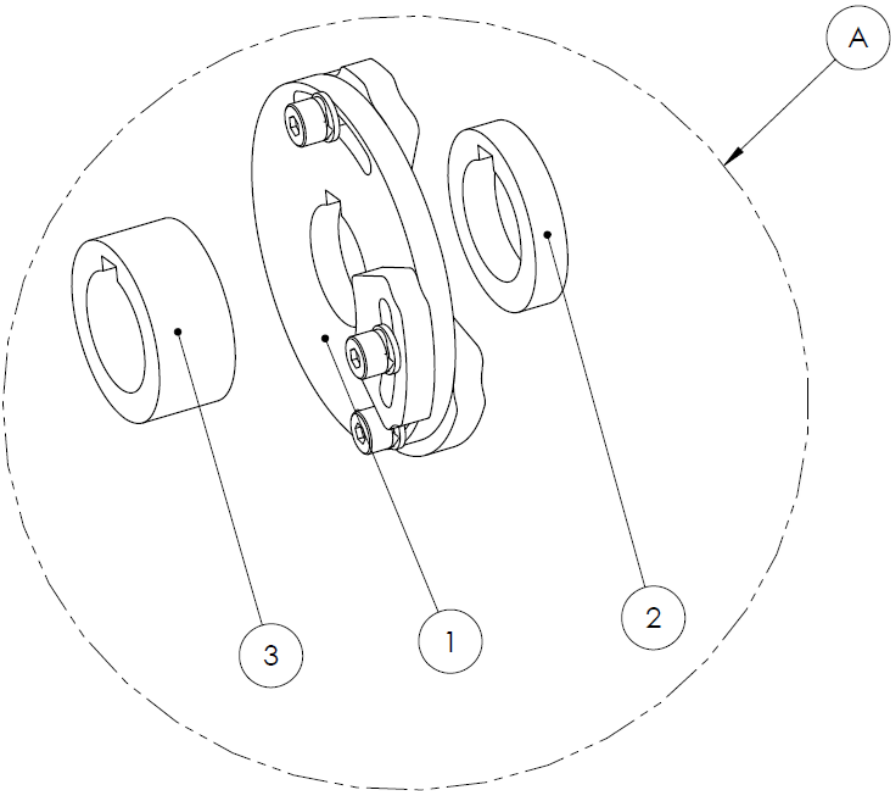
ITEM	PART NO.	DESCRIPTION	REFERENCE	Q'TY
A	5030500	WELDING CLAMP UNIT	P02-0362200	1
1	5030501	CLAMP SEAT - LONG	P02-035700A	1
2	5030495	CAM FOLLOWER UNIT	P02-0362900	1
3	5030496	PIN 4×18	P1109-0104018B	1
4	5030504	CUTTER	P02-0357200	1
5	5030498	COMPRESS SPRING	P1201-0010200	1
6	5030506	SPRING HOLDER	P1202-001240A	1
7	5030507	SHOULDER SCREW	P02-0358600	2

Figure 5-1 Holding Gripper Unit 5030508/P02-0394600



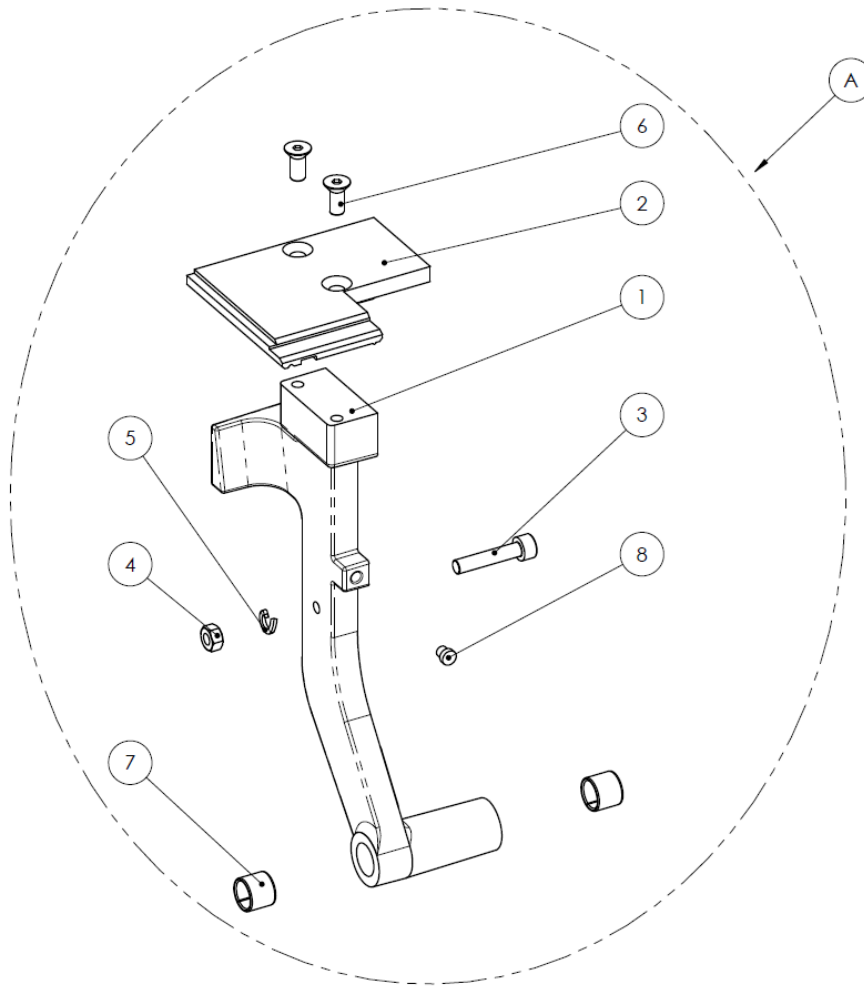
ITEM	PART NO.	DESCRIPTION	REFERENCE	Q'TY
A	5030508	HOLDING GRIPPER UNIT	P02-0394600	1
1	5030809	HOLDING GRIPPER	P02-0358000	1
2	5030498	COMPRESS SPRING	P1201-0010200	1
3	5030495	CAM FOLLOWER UNIT	P02-0362900	1
4	5030501	CLAMP SEAT - LONG	P02-035700A	1
5	5030496	PIN 4×18	P1109-0104018B	1
6	5030514	SCREW M4×16	P1101-0504016AN	3
7	5030461	NUT M4	P1102-0104AN	1
8	5030786	SPRING WASHER 4MM	P1103-0204Z	1

Figure 6-1 Position Cam Unit 5030517/P02-0394700



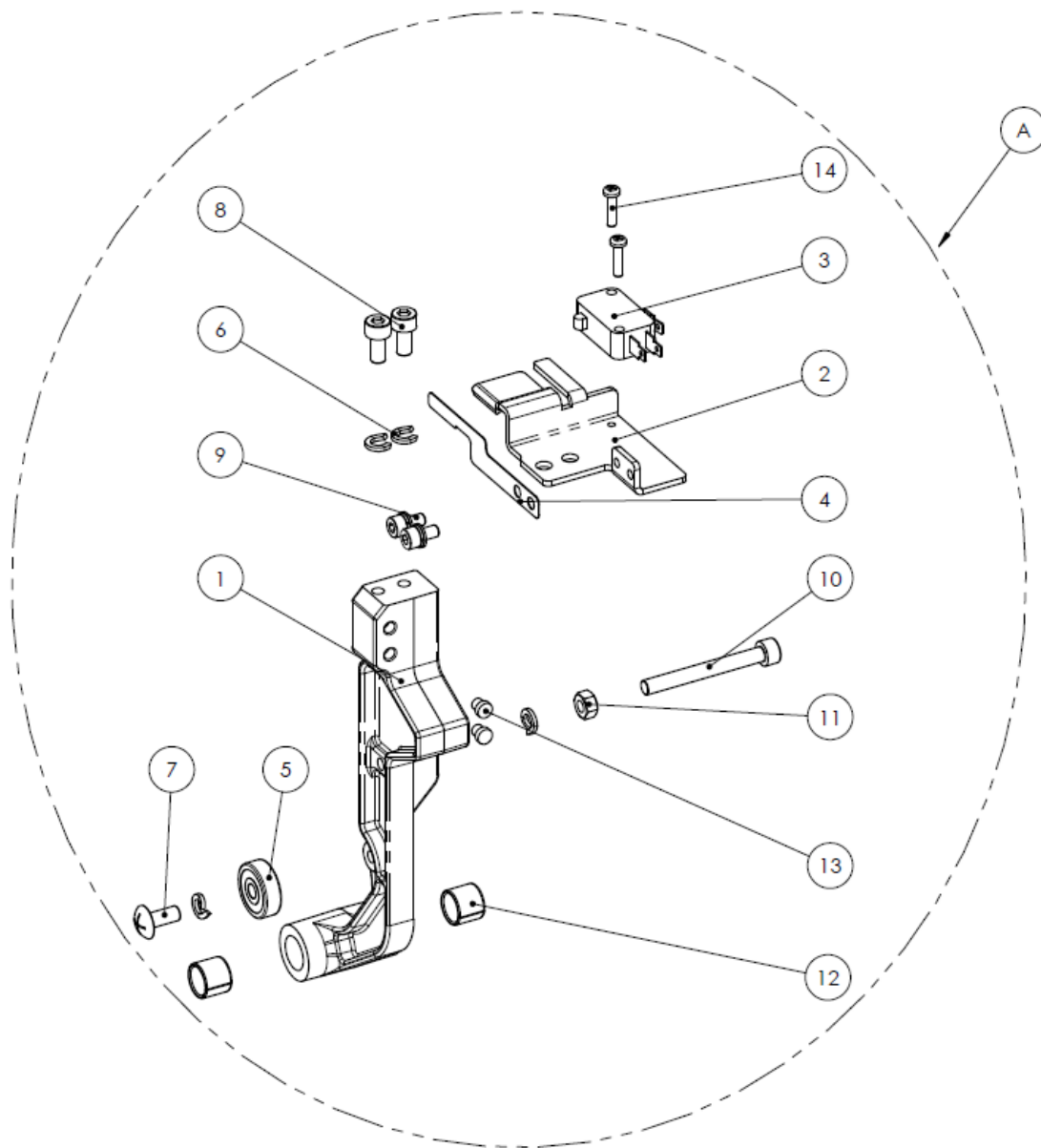
ITEM	PART NO.	DESCRIPTION	REFERENCE	Q'TY
A	5030517	POSITION CAM UNIT	P02-0394700	1
1	5030518	POSITON CAM	P02-0362600	1
2	5030519	SPACER RING SHORT	P02-0260500	1
3	5030520	SPACER RING LONG	P02-0360400	1

Figure 7-1 Sliding Table Unit 5030521/P02-0394300



ITEM	PART NO.	DESCRIPTION	REFERENCE	Q'TY
A	5030521	SLIDING TABLE UNIT	P02-304300	1
1	5030522	SLIDING TABLE ARM	P02-0357500	1
2	5030523	SLIDING TABLE	P02-0357400	1
3	5030524	SCREW M5×25	P1101-0505025AN	1
4	5030435	NUT M5	P1102-0105AN	1
5	5030434	SPRING WASHER 5MM	P1103-0205Z	1
6	5030452	SCREW M5×12	P1101-0405012AN	2
7	5030528	BEARING CB1010	P1104-0310101	2
8	5030529	CUSHION SPACER	P06-0065300	1

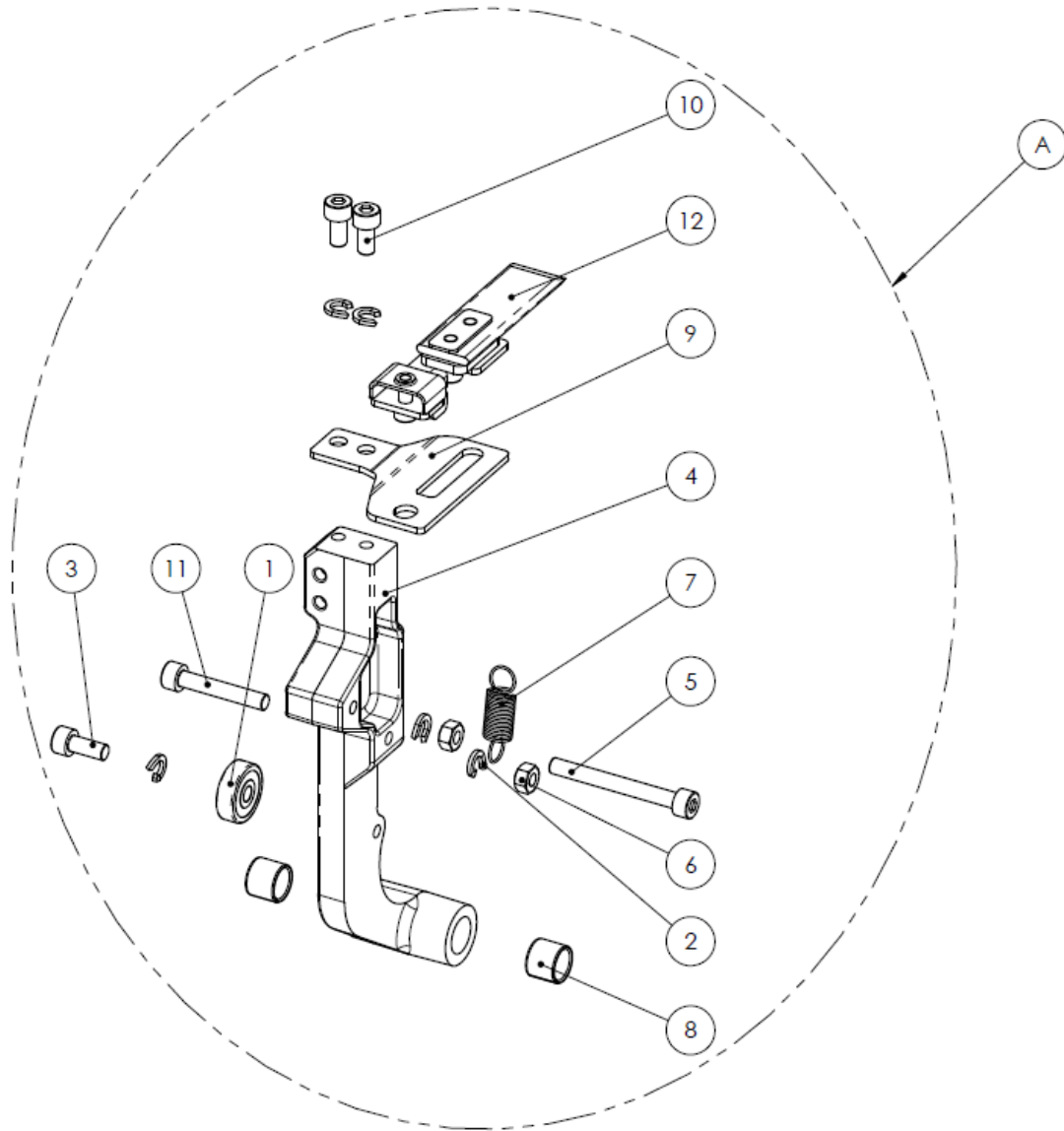
Figure 8-1 Separating Plate Unit 5030530/P02-0394400



ITEM	PART NO.	DESCRIPTION	REFERENCE	Q'TY
A	5030530	SEPARATOR UNIT	P02-0394400	1
1	5030531	SEPARATOR ARM	P02-0357600	1
2	5030532	SEPARATOR PLATE	P01-057560A	1
3	5030533	MICROSWITCH VX-5-1A2	P0311-060000200	1
4	5030534	ACTUATOR	P01-0575700	1

ITEM	PART NO.	DESCRIPTION	REFERENCE	Q'TY
5	5030535	BALL BEARING 635ZZ	P1104-020635ZZ2	1
6	5030434	SPRING WASHER 5MM	P1103-0205Z	4
7	5030537	SCREW M5×12	P1101-0105012AZ	1
8	5030538	SCREW M5×10	P1101-0505010AN	2
9	5030479	SCREW M4×8	P1101-0904008AN	2
10	5030540	SCREW M5×45	P1101-0505045AN	1
11	5030435	NUT M5	P1102-0105AN	1
12	5030528	BUSHING CB1010	P1104-0310101	2
13	5030529	CUSHION SPACER	P06-0065300	2
14	5030544	SCREW M3×12	P1101-0303012AZ	2

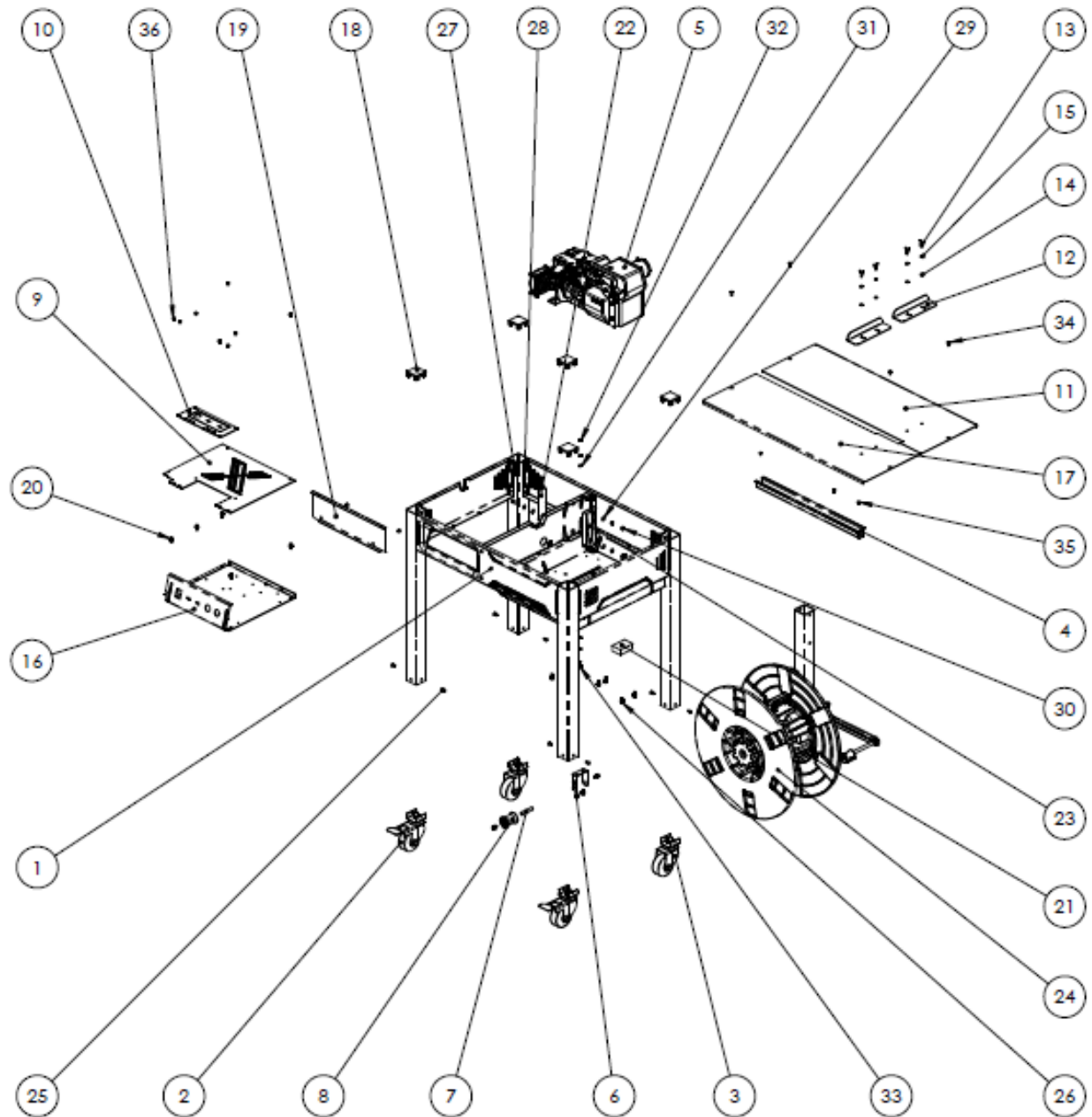
Figure 9-1 Heater Plate Unit 5030545/P02-0394500



ITEM	PART NO.	DESCRIPTION	REFERENCE	Q'TY
A	5030545	HEATER PLATE UNIT	P02-0394500	1
1	5030535	BALL BEARING 635ZZ	P1104-020635ZZ2	1
2	5030434	SPRING WASHER 5MM	P1103-0205Z	5
3	5030548	SCREW M5×12	P1101-0505012AN	1
4	5030531	SEPERATOR ARM	P02-0357600	1
5	5030540	SCREW M5×45	P1101-0505045AN	1
6	5030435	NUT M5	P1102-0105AN	2

ITEM	PART NO.	DESCRIPTION	REFERENCE	Q'TY
7	5030552	HEATER PLATE SPRING	P1202-0011700	1
8	5030528	BUSHING CB1010	P1104-0310101	2
9	5030554	HEATER PLATE SUPPORT	P01-0577000	1
10	5030538	SCREW M5×10	P1101-0505010AN	2
11	5030442	SCREW M5×30	P1101-0505030AN	1
12	5030557	HEATER PLATE ASSEMBLY	P02-0362300	1

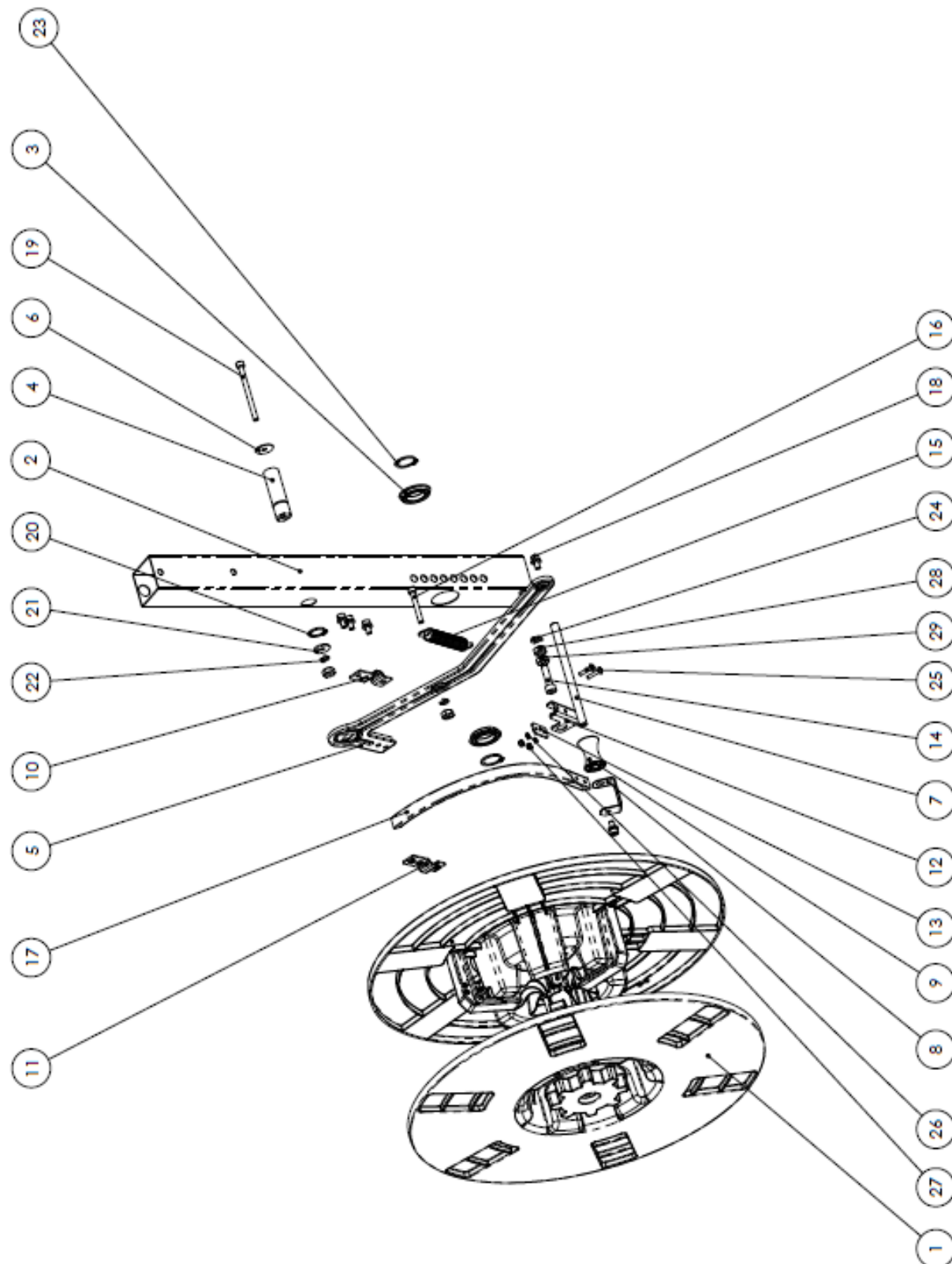
Figure 10-1 Body Frame 5030558



ITEM	PART NO.	DESCRIPTION	REFERENCE	Q'TY
0	5050558	BODY FRAME	EXS-100	
1	5030559	CABINET COMPONENTS		1
2	5030560	CASTER	P02-0362700	2
3	5030561	CASTER WITH BRAKE	P02-0362800	2
4	5030562	TRACK	P01-0579400	1

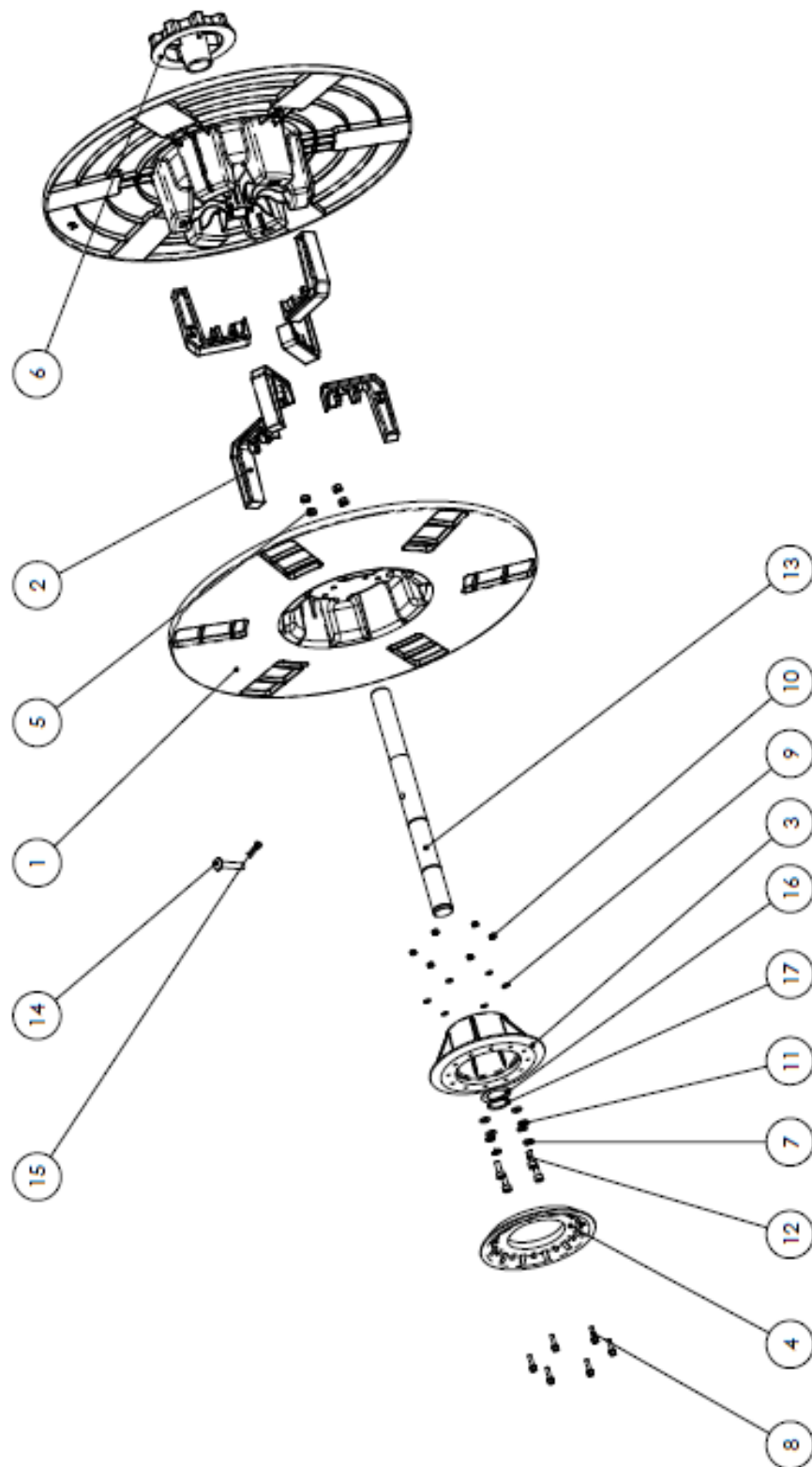
ITEM	PART NO.	DESCRIPTION	REFERENCE	Q'TY
5	5030563	STRAPPING HEAD UNIT		1
6	5030564	GUIDE ROLLER BRACKET	P01-0584300	1
7	5030565	GUIDE ROLLER PIN	P02-0076400	1
8	5030566	GUIDE ROLLER	P06-002150A	1
9	5030567	ELECTRICAL BOX COVER	P01-058000A	1
10	5030568	PANEL COVER	P01-057840A	1
11	5030569	REAR TABLE COVER	P01-0580200	1
12	5030570	BOX STOPPER	P01-057810A	2
13	5030571	SCREW M5×12	P1101-1105012AZ	4
14	5030572	WASHER 5×10	P1103-010510N	4
15	5030434	SPRING WASHER 5MM	P1103-0205Z	6
16	5030574	ELECTRICAL BOX	P01-0579900	1
17	5030575	FRONT TABLE COVER	P01-0580100	1
18	5030576	PLASTIC CAPS	P1114-01000020B	6
19	5030577	ELECTRICAL BOX REAR SUPPORT	P01-0585000	1
20	5030431	SCREW M5×12	P1101-0905012AN	5
21	5030579	CUSHION	P06-002200A	1
22	5030580	SUPPORT PLATE	P01-0588000	1
23	5030581	SUPPORT BRACKET	P01-0588100	1
24	5030582	DISPENSER ASSEMBLY		1
25	5030583	SCREW M5×10	P1101-0605010BN	12
26	5030480	SCREW M6×12	P1101-0906012AN	10
27	5030585	SCREW M6×20	P1101-0506020AN	2
28	5030458	SPRING WASHER 6MM	P1103-0206Z	4
29	5030587	WASHER M6×13×1t	P1103-01061301Z	4
30	5030588	NUT M6	P1102-0106AZ	2
31	5030463	WASHER M6×13×1t	P1103-01051201Z	2
32	5030590	NUT M5	P1102-0105AZ	1
33	5030462	SCREW M5×16	P1101-0505016AN	1
34	5030452	SCREW M5×12	P1101-0405012AN	4
35	5030593	SCREW M4×8	P1101-0404008AN	3
36	5030594	SCREW M4×6	P1101-0104006AZ	1

Figure 11-1 Dispenser Assembly 5030595



ITEM	PART NO.	DESCRIPTION	REFERENCE	Q'TY
0	5030595	DISPENSER ASSEMBLY	EXS-100	1
1	5030596	DISPENSER UNIT		1
2	5030597	DISPENSER SEAT	P01-0579200	1
3	5030598	BALL BEARING 6805ZZNR	P1104-076805ZZ0	2
4	5030599	BARAKE SUPPORT SHAFT	P02-035940A	1
5	5030600	BRAKE ARM	P01-0578000	1
6	5030601	BRAKE WASHER	P01-0584500	1
7	5030602	ROLLER SHAFT	P02-0359300	1
8	5030603	ROLLER BRACKET	P01-0584100	1
9	5030604	ROLLER	P06-000680B	1
10	5030605	BELT PLATE - FRONT	P01-0578300	1
11	5030606	BELT PLATE - REAR	P01-0584600	1
12	5030607	BELT FIXER	P01-057820A	1
13	5030608	BELT ADJUST PLATE	P01-058420A	1
14	5030609	SCREW M8×30	P1101-0508030AN	1
15	5030610	BRAKE SPRING	P1202-0012500	1
16	5030611	SCREW M6×45	P1101-0506045AZ	1
17	5030612	V-BELT	P0902-0001400	1
18	5030480	SCREW M6×12	P1101-0906012AN	5
19	5030614	SCREW M6×80	P1101-0506080AN	1
20	5030615	C-RING S-20	P1105-0120B	1
21	5030457	WASHER M6×21×2t	P1103-01062102Z	1
22	5030458	SPRING WASHER 6MM	P1103-0206Z	2
23	5030618	C-RING S-25	P1105-0125B	2
24	5030619	SPRING WASHER 8MM	P1103-0208Z	1
25	5030620	SCREW M4×20	P1101-0104020AZ	2
26	5030486	SPRING WASHER 4MM	P1103-0204Z	2
27	5030622	NUT M4	P1102-0104AZ	2
28	5030623	NUT M8, 12MM	P1102-0108AZ	3
29	5030624	NUT M8	P1102-0108BZ	1

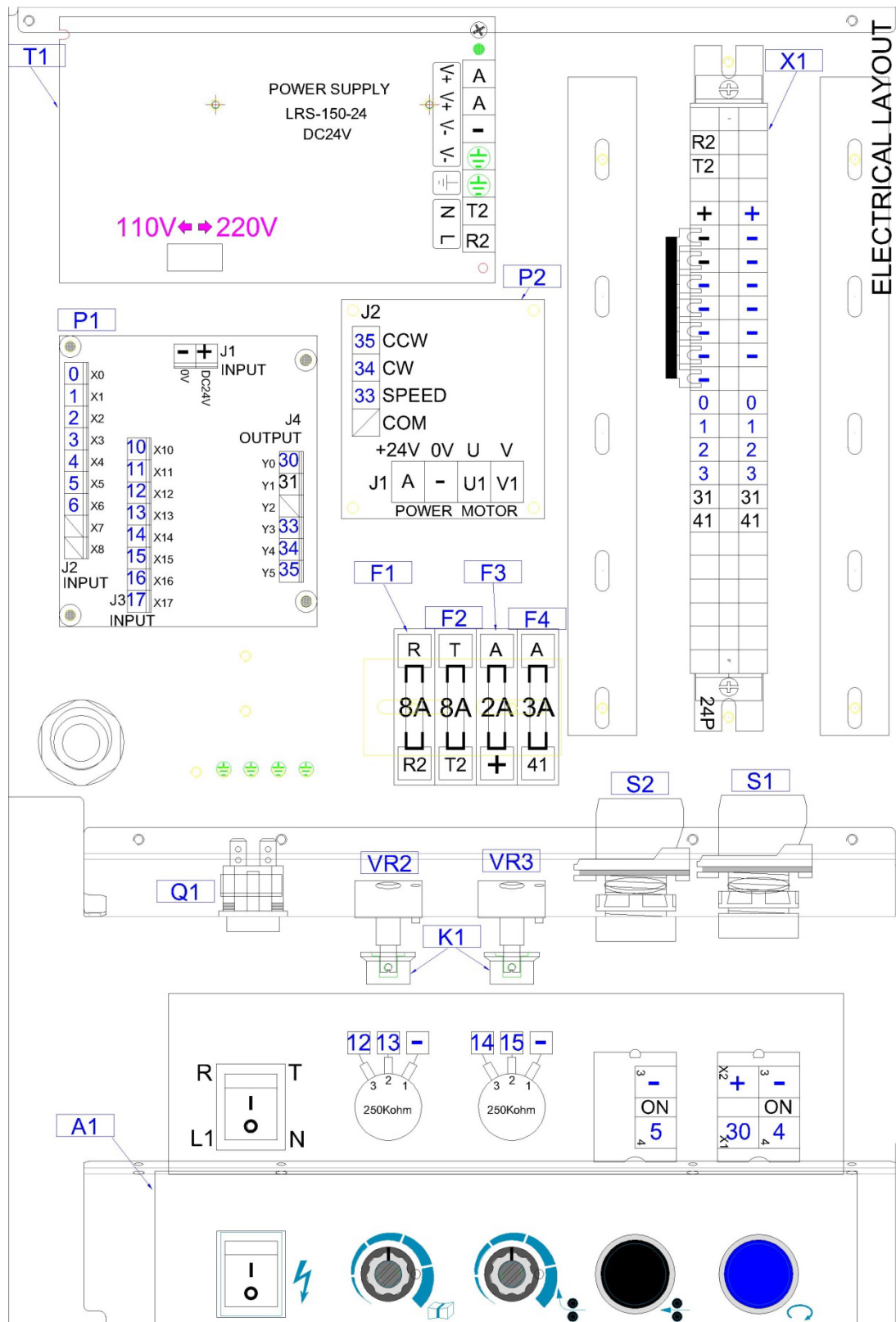
Figure 12-1 Dispenser Unit 5030625

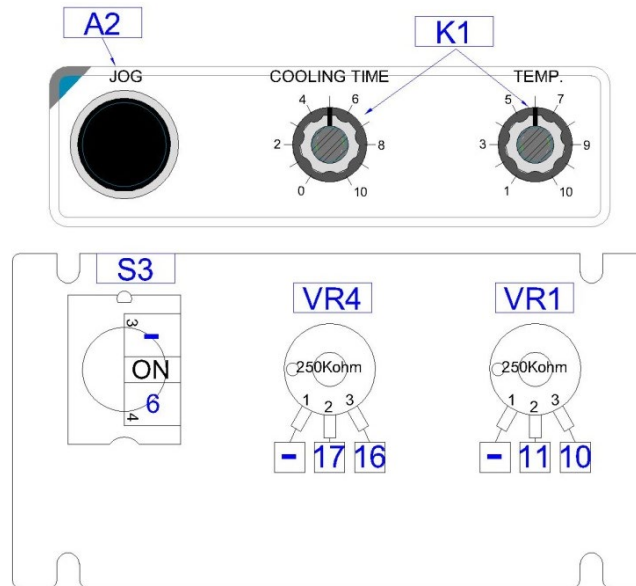


ITEM	PART NO.	DESCRIPTION	REFERENCE	Q'TY
0	5030625	DISPENSER UNIT		1
1	5030626	DISPENSER	P06-0058200	2
2	5030627	EXTENSION CLAW	P06-0058500	6
3	5030628	DISPENSER CONNECT	P06-0058300	1
4	5030629	BRAKE WHEEL	P06-0058400	1
5	5050630	SCREW M6	P1102-0106AZ	4
6	5030631	DISPENSER HANDLE	P06-0058100	2
7	5030458	SPRING WASHER 6MM	P1103-0206Z	4
8	5030633	SCREW M4×18	P1101-0904018AN	6
9	5030634	WASHER M4×8×1t	P1103-01040801Z	6
10	5030461	NUT M4	P1102-0104AN	6
11	5030636	WASHER 6×12×1t	P1103-010612N	4
12	5030492	SCREW M6×16	P1101-0506016AN	4
13	5030638	DISPENSER SHAFT	P02-0313700	1
14	5030639	LOCK PIN	P02-0076300	1
15	5030640	SNAP PIN 08	P1109-030801Z	1
16	5030641	DISPENSER SPACER	P01-0584400	1
17	5030618	C-RING S-25	P1105-0125B	1

Electrical Panel and Wiring Parts

5030400



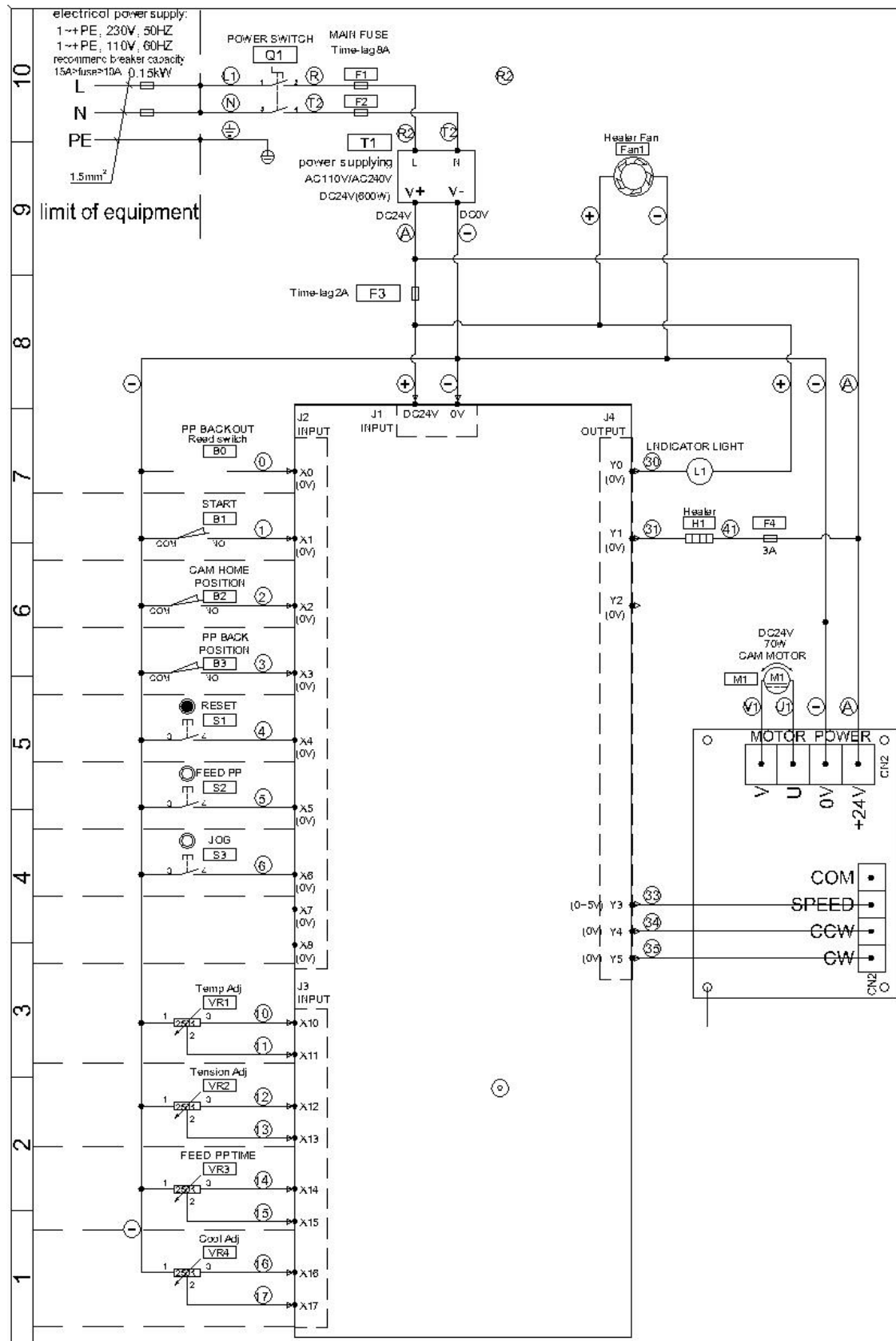


Electrical Layout Page 2 of 2

January 22, 2019

ITEM	PART NO.	DESCRIPTION	REFERENCE	Q'TY
	5030400	ELECTRICAL PANEL EXS-100		
Q1	5030401	POWER SWITCH	P0311-010000300	1
F1.1, F2.2	5030402	FUSE, 8A-6×30mm	P0305-030001100	2
F1.2, F2.2	5030403	FUSE SEAT	P0305-020001000	2
F1.3, F2.2	5030404	FUSE CAP	P0305-020001100	2
F3.1,	5030405	FUSE, 2A-6×30mm	P0305-030000100	1
F3.2	5030403	FUSE SEAT	P0305-020001000	1
F3.3	5030404	FUSE CAP	P0305-020001100	1
F4.1	5030408	FUSE, 3A-6×30mm	P0305-030000200	1
F4.2	5030403	FUSE SEAT	P0305-020001000	1
F4.3	5030404	FUSE CAP	P0305-020001100	1
S2, S3	5030411	BUTTON (BLACK)	P0313-010006800	2
S1	5030412	BUTTON (BLUE)	P0313-010007300	1
P1	5030413	MAIN PCB	P0309-010013000	1
P2	5030414	DC DRIVE CARD	P0315-020000900	1
VR1, VR2 VR3, VR4	5030415	POTENTIOMETER ADJUSTABLE	P0318-010001700	4
K1	5030416	KNOB RN-99F, 6.4	P1113-0001000	4
T1	5030417	POWER SUPPLY	P0307-010001600	1
A1	5030418	OPERATION STICKER	P1002-0008600	1
A2	5030419	PANEL STICKER	P1002-0008700	1
X1	5030420	TERMINAL SEAT	P0304-010001200	1

Appendix A: Electrical Schematic



Warranty Statement

Eastey EXS-100 Semi-Automatic Strapping Machine

Warranty Statement

Eastey warrants that all products it ships will be in good working order and free from defects in material and workmanship and will conform to the published specifications for that product.

Warranty Period

Drive motor:	1 year
Heater Plate Assembly:	6 months
Strap Guides:	6 months
End Gripper:	6 months
Cutter:	6 months
Holding Gripper:	6 months

All other parts: 1 year (Except for moving parts which are subject to normal wear, tear and replacement which are warranted to be free from defects in material and workmanship.)

Operation Quality

Quality of operation achieved in a given application is dependent on the installation, the material handling, and the maintenance provided. Eastey makes no warranty that the quality achieved in an application will be the same as that achieved in our demo facility.

Environmental Conditions

This equipment is designed for indoor operation in a typical clean, dry factory environment, protected from rain and moisture. Do not expose this equipment to excessive moisture or oily conditions. Do not operate the machine in any extremely wet or oily environment that may exceed operating specifications. Exposure to or operation under environmental conditions outside specifications for this machine will void warranty,

Shipping Policy

Customer pays all incoming shipping. If the item is defective and under warranty, Eastey pays return shipping charges for least costly method. If expedited shipping is desired, customer must furnish his shipping account and shipping fees will be charged to that account.

Warranty Verification

If you conclude that a product may be defective and may be covered by warranty, obtain a Return Material Authorization number by calling our technical support number (toll free at 1-800-835-9344, or 763-428-4846 or Fax: 763-795-8867) or e-mail: info@eastey.com. Once an RMA number has been obtained, return the defective item to Eastey. Eastey will analyze the product and, if found to be defective, we will, at our option, replace or repair the item. If the item is found to not be eligible for warranty, you

will be notified and may decide on disposition. Defective products will be replaced or repaired as promptly as possible.

Warranty Eligibility

The warranty provided by Eastey is only to the original buyer.

Limited Warranty

THE ABOVE WARRANTY IS EXCLUSIVE AND IN LIEU OF ALL OTHER WARRANTIES, WHETHER EXPRESSED OR IMPLIED, INCLUDING THE IMPLIED WARRANTIES OF MERCHANTABILITY, FITNESS FOR A PARTICULAR PURPOSE AND NONINFRINGEMENT.

Disclaimer of Damages

REGARDLESS OF WHETHER ANY REMEDY SET FORTH HEREIN FAILS OF ITS ESSENTIAL PURPOSE, IN NO EVENT WILL EASTEY BE LIABLE FOR ANY SPECIAL, CONSEQUENTIAL, INDIRECT OR SIMILAR DAMAGES, INCLUDING LOST PROFIT OR LOST OPPORTUNITIES OF ANY TYPE ARISING OUT OF THE USE OR INABILITY TO USE THESE PRODUCTS EVEN IF EASTEY HAS BEEN ADVISED OF THE POSSIBILITY OF SUCH DAMAGES.

Customer Support

Eastey Technical Service

For help setting up or operating the Eastey Semi-Automatic Strapping Machine, please contact Eastey Technical Service at one of the numbers listed below.

Toll-Free Phone	800-835-9344
Phone	763-428-4846
Fax	763-795-8867
E-mail	info@eastey.com
Web	www.eastey.com

Thanks again for your purchase of Eastey products. We are pleased to be a part of your packaging needs.

PACKAGING PLUS
317-841-1126 INFO@HOTMELTUNITS.COM



PACKAGING PLUS
317-841-1126 INFO@HOTMELTUNITS.COM